



CITADEL
ARCHITECTURAL PRODUCTS

COLOR GUIDE

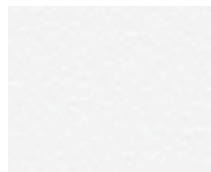
CLADDING SYSTEMS & GLAZING PANELS

STOCK POLYESTER FINISHES

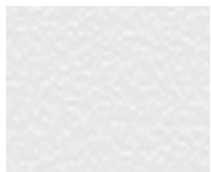


Durable yet budget-friendly. These finishes offer excellent durability while providing a more economical alternative. Available in a wide range of colors, the textured finishes help conceal any dings or dents and the smooth finishes provide an alternate option for glazing infill.

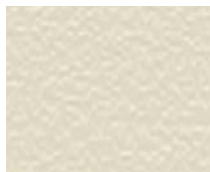
SERIES A: Standard Textured Polyester (.010")



HIGH GLOSS WHITE



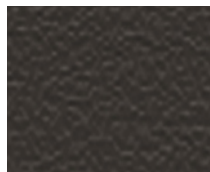
SHASTA WHITE



BONE WHITE



PUEBLO BEIGE



STATUARY BRONZE



CLASSIC BRONZE



METALLIC SILVER

SERIES B: Premium Textured Acrylic Urethane (.010")



SILVER GREY



SLATE GREY



CHARCOAL GREY



SANDSTONE



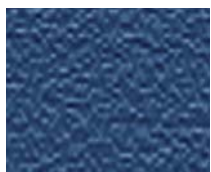
SIERRA TAN



MEDIUM BRONZE



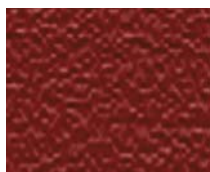
SKY BLUE



REGAL BLUE



TERRA COTTA



REGAL RED



COLONIAL RED



BRANDYWINE



PATINA GREEN



HEMLOCK GREEN



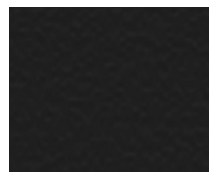
SHERWOOD GREEN



HARTFORD GREEN

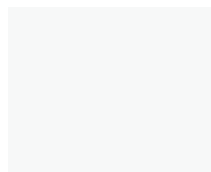


MANSARD BROWN

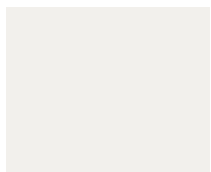


EBONY

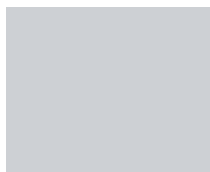
SERIES D: Standard Smooth Polyester (.024")



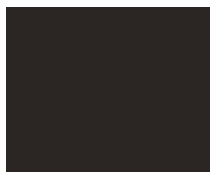
POLAR WHITE (48" ONLY)



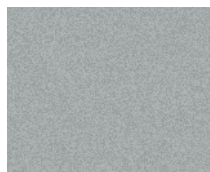
CLASSIC WHITE



BATTLESHIP GREY (48" ONLY)



CLASSIC BRONZE



METALLIC SILVER

NOTE: Series C and Series E have been discontinued.

STOCK PVDF FINISHES



Guaranteed performance just got better. As an industry benchmark, Kynar 500® coatings have long been known for quality and durability. Now, these coatings have become even better with the introduction of 'cool' technology providing enhanced performance for longer... guaranteed.

SERIES F: Standard Kynar 500® (.024")

ARCTIC WHITE ❄️ 89	RESERVE WHITE ❄️ 87	SHASTA WHITE ❄️ 85	SILVER GREY ❄️ 59	SLATE GREY ❄️ 37	CHARCOAL GREY ❄️ 30
BONE WHITE ❄️ 80	SANDSTONE ❄️ 66	PUEBLO BEIGE ❄️ 64			
SIERRA TAN ❄️ 37	MEDIUM BRONZE ❄️ 31	STATUARY BRONZE ❄️ 30			
EBONY 0					



- greater solar reflectivity
- increased energy efficiency
- exceptional color stability
- superior chalk and fade resistance

SERIES G: Premium Kynar 500® (.024")

SKY BLUE ❄️ 32	REGAL BLUE ❄️ 33	TERRA COTTA ❄️ 37	REGAL RED ❄️ 45	COLONIAL RED ❄️ 30	BRANDYWINE 23
PATINA GREEN ❄️ 42	HEMLOCK GREEN ❄️ 29	SHERWOOD GREEN ❄️ 26	HARTFORD GREEN 4	MANSARD BROWN ❄️ 27	EXTRA DARK BRONZE

❄️ - Indicates ULTRA-COOL® color. 32 - Indicates the Solar Reflectivity Index (SRI). Higher numbers means greater reflectivity and less heat gain.
 > - Indicates a directional, lot-specific material. When specifying material for a project, panels with these finishes must be installed in all the same direction (180° not acceptable).

STOCK PVDF FINISHES *(continued)*

30
YEAR
WARRANTY

The beauty of color, the shine of metal. Mixing mica or metallic flakes within the paint coating allows the base color to offer additional pop, bringing depth to the building elevation. This look is further enhanced by the way in which these flakes reflect the light from different viewpoints.

SERIES H: Standard Kynar 500® Mica/Metallic (.024")



SILVER METALLIC > ❄️ 72



PLATINUM > ❄️ 57



NORTH SEA MIST > ❄️ 47



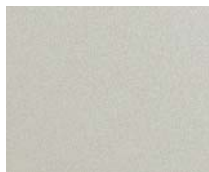
PEWTER > ❄️ 26



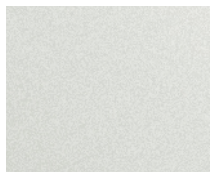
GUN METAL > ❄️ 28



LIQUID COPPER > ❄️ 42



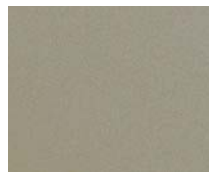
ATLANTIC SUNRISE > ❄️ 53



CHAMPAGNE METALLIC > ❄️ 59



CHAMPAGNE BRONZE > ❄️ 39



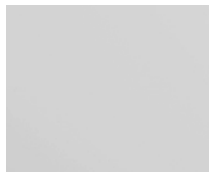
DESERT SAND > ❄️ 46

STOCK ANODIZED FINISHES

20
YEAR
WARRANTY

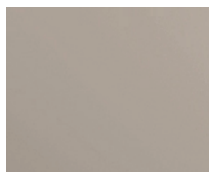
Actual anodized aluminum. These finishes are chemically and electrically produced (not just an anodic-look paint), and offer an excellent complement to storefront and glazing system extrusions.

SERIES I: Standard Anodized (.024")

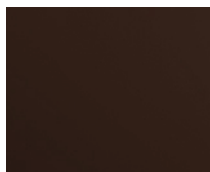


CLEAR SATIN ANODIZED >

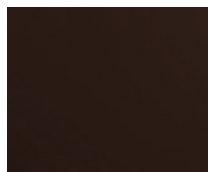
SERIES J: Premium Anodized (.024")



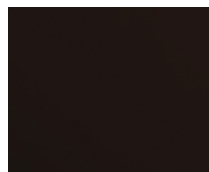
CHAMPAGNE ANODIZED >



MEDIUM BRONZE ANODIZED >



DARK BRONZE ANODIZED >



BLACK ANODIZED >

- Anodized finishes are Exterior Standard No. 1
- Class I or Class II anodizing is available as a premium custom finish. However, the warranty remains the same and fabrication difficulties will result (increased crazing, cracking) due to the film thickness.

CUSTOM / NON-STOCK FINISHES

An additional degree of expression. From metallic paints to specialty finishes and 'natural' metals, these custom offerings provide a variety of ways to add another layer of visual dimension to any elevation. Or, take that unique approach even further with a wood grain finish to bring warmth and depth.

Custom Specialty Finishes



LONG
BRUSHED



RUSTED STEEL
(36" WIDE ONLY)

- Moldings are not available in these finishes.

Custom Metals



STAINLESS STEEL
(48" WIDE ONLY)



QUARTZ-ZINC®
(39.25" WIDE ONLY)



COPPER
(48" WIDE ONLY)

- Moldings are not available in these finishes.

Custom Anodized Finishes



LIGHT ZINC
ANODIZED



DARK ZINC
ANODIZED



COPPER PENNY
ANODIZED

- Moldings are not available in these finishes.

Custom Wood Grain Finishes



BARREL OAK - LT
(48" ONLY)



HERITAGE OAK - DK
(48" ONLY)



MILLWORK CHERRY - LT
(48" ONLY)



HEIRLOOM CHERRY - DK
(48" ONLY)



MOUNTAIN PINE - LT
(48" ONLY)

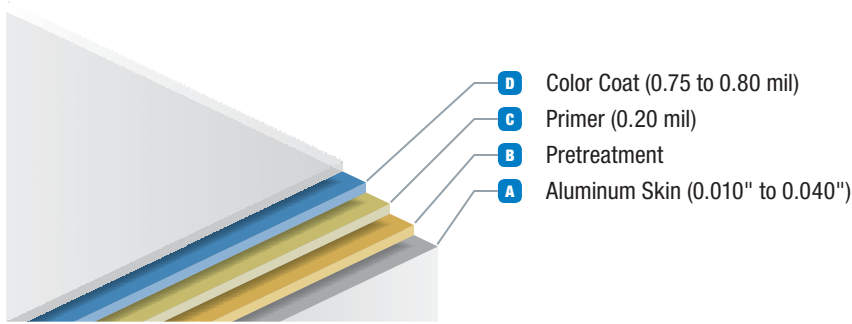


HAMPTON TEAK - DK
(48" ONLY)



NORTHWEST FIR - DK
(48" ONLY)

- These decorative finishes are on an .032" aluminum substrate.
- Grain patterns are available in both light (LT) and dark (DK) versions.
- Moldings are available (batten profiles only) in the same grain pattern.



AVAILABILITY BY PRODUCT						
Panel 15®	SinoCore®	ProCore™	Panel 20®	Envelope 2000® RV / DRV	Envelope 2000® RR / RS	GlazeGuard®

CATEGORY	TYPE	COMPOSITION	FEATURES & BENEFITS	DESCRIPTION
SERIES A,D	1-Coat ¹ Textured/Smooth Polyester	D - color coat B - pretreatment A - aluminum skin	<ul style="list-style-type: none"> • economical choice for coatings • durable, hard surface • available in a wide range of colors 	Thermosetting paint system applied with similar techniques to PVDF (based on volume).
SERIES B	1-Coat Textured Acrylic Urethane	D - color coat C - primer B - pretreatment A - aluminum skin	<ul style="list-style-type: none"> • used for premium/custom colors • similar in performance to polyester • good gloss retention and weatherability 	Two-component cross-linked system applied with electrostatic or conventional spray equipment.
SERIES F,G	2-Coat Smooth PVDF	D - color coat C - primer B - pretreatment A - aluminum skin	<ul style="list-style-type: none"> • industry benchmark for quality • unsurpassed color retention, chemical resistance and film erosion resistance 	Heat-set coating using 70% Kynar 500® or Hylar 5000® resins.
SERIES H	2-Coat Smooth PVDF	D - color coat C - primer B - pretreatment A - aluminum skin	<ul style="list-style-type: none"> • metallic look with mica flake • performance same as standard 2-coat smooth PVDF 	Heat-set coating using 70% Kynar 500® or Hylar 5000® resins with mica flakes.
SERIES I,J	Integral Anodized	<ul style="list-style-type: none"> • nickel/hydrate seal • colorant² • aluminum oxide • barrier • aluminum skin 	<ul style="list-style-type: none"> • not an anodic look or paint, but a true integral anodized aluminum to match storefront and window extrusions 	Transparent or colored oxidized finish integral to the base aluminum induced with electricity and chemicals.

1 - Primer is present on Polar White and Battleship Grey.
 2 - Clear Satin Anodized does not use a colorant.
 3 - Series C and Series E have been discontinued.

Citadel Architectural Products, Inc.
 3131-A North Franklin Road
 Indianapolis, Indiana 46226
 phone (317) 894-9400 • (800) 446-8828
 fax (317) 894-6333 • (800) 247-2635
www.citadelap.com • info@citadelap.com



Distributed by:



P: (503) 487-0822 (OR, WA, ID, AK, CA)
 P: (469) 518-5860 (TX, AL, LA, MS)
elementpanels.com
info@elementpanels.com