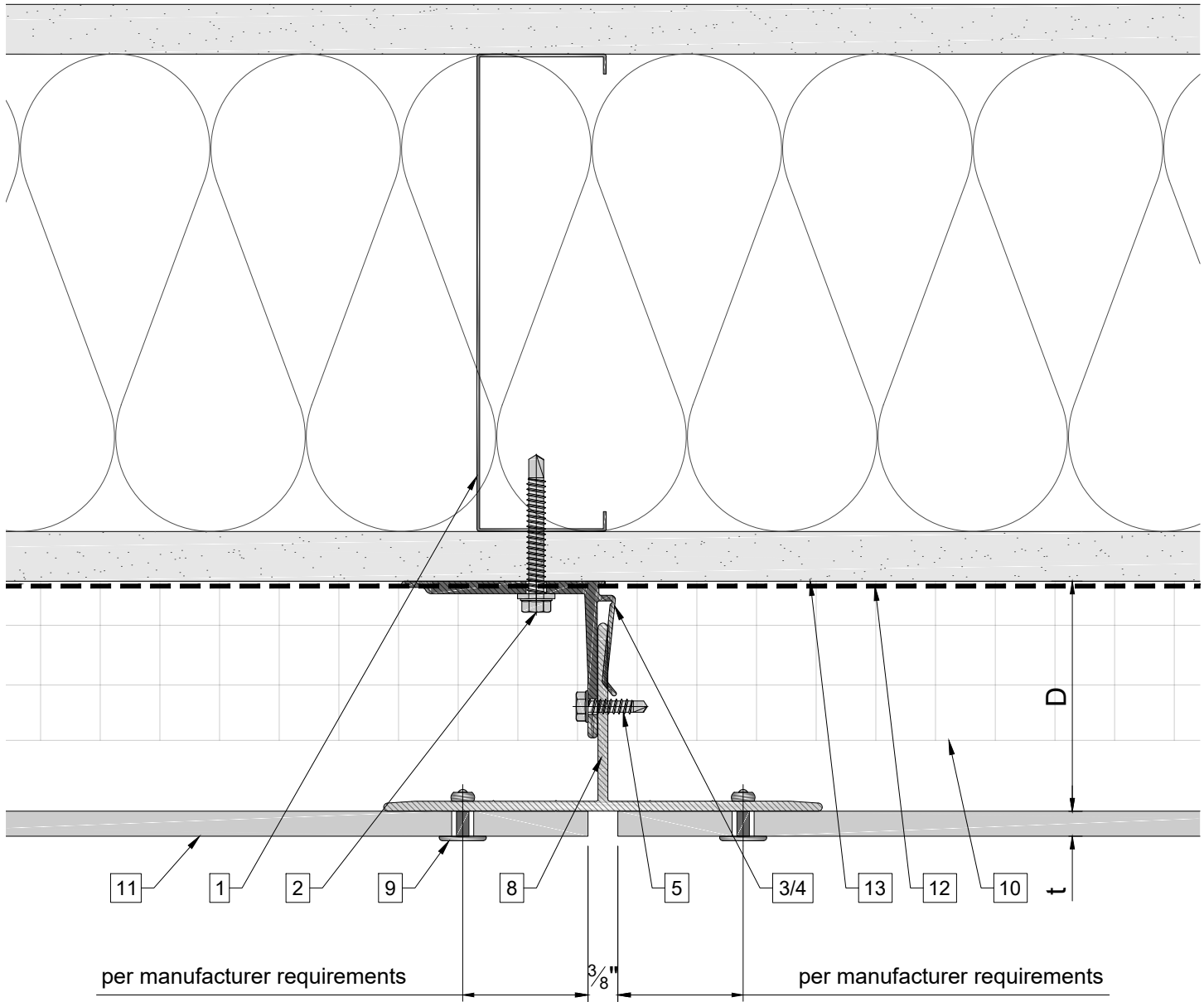


| System depth               |   |  |                   |
|----------------------------|---|--|-------------------|
| Bracket                    | min. D system depth                       | max. D system depth                      | t panel thickness |
| Alpha V 035 / Alpha V+ 035 | 1 <sup>13</sup> / <sub>16</sub> " (47mm)  | 2 <sup>15</sup> / <sub>16</sub> " (75mm) | varies            |
| Alpha V 050 / Alpha V+ 050 | 2 <sup>1</sup> / <sub>16</sub> " (53mm)   | 3 <sup>9</sup> / <sub>16</sub> " (90mm)  | varies            |
| Alpha V 080 / Alpha V+ 080 | 3 <sup>1</sup> / <sub>4</sub> " (83mm)    | 4 <sup>3</sup> / <sub>4</sub> " (120mm)  | varies            |
| Alpha V 100 / Alpha V+ 100 | 4 <sup>1</sup> / <sub>16</sub> " (103mm)  | 5 <sup>1</sup> / <sub>2</sub> " (140mm)  | varies            |
| Alpha V 115 / Alpha V+ 115 | 4 <sup>5</sup> / <sub>8</sub> " (118mm)   | 6 <sup>1</sup> / <sub>8</sub> " (155mm)  | varies            |
| Alpha V 135 / Alpha V+ 135 | 5 <sup>7</sup> / <sub>16</sub> " (138mm)  | 6 <sup>7</sup> / <sub>8</sub> " (175mm)  | varies            |
| Alpha V 150 / Alpha V+ 150 | 6" (153mm)                                | 7 <sup>1</sup> / <sub>2</sub> " (190mm)  | varies            |
| Alpha V 170 / Alpha V+ 170 | 6 <sup>13</sup> / <sub>16</sub> " (173mm) | 8 <sup>1</sup> / <sub>4</sub> " (210mm)  | varies            |
| Alpha V 185 / Alpha V+ 185 | 7 <sup>3</sup> / <sub>8</sub> " (188mm)   | 8 <sup>7</sup> / <sub>8</sub> " (225mm)  | varies            |
| Alpha V 200 / Alpha V+ 200 | 8" (203mm)                                | 9 <sup>1</sup> / <sub>2</sub> " (240mm)  | varies            |
| Alpha V 220 / Alpha V+ 220 | 8 <sup>3</sup> / <sub>4</sub> " (223mm)   | 10 <sup>1</sup> / <sub>4</sub> " (260mm) | varies            |
| Alpha V 255 / Alpha V+ 255 | 10 <sup>3</sup> / <sub>16</sub> " (258mm) | 11 <sup>5</sup> / <sub>8</sub> " (295mm) | varies            |

**Legend**

- |  |   |   |
|--|---|---|
| <ul style="list-style-type: none"> <li>1. Steel stud (16 GA typical)</li> <li>2. Perimeter anchor</li> <li>3. Alpha V wall bracket</li> <li>4. Alpha V+ wall bracket</li> <li>5. st/st self-drilling screw <sup>3</sup>/<sub>16</sub>" x <sup>3</sup>/<sub>4</sub>"</li> <li>6. st/st self-drilling screw <sup>1</sup>/<sub>4</sub>" x <sup>3</sup>/<sub>4</sub>"</li> <li>7. Vertical L-profile</li> <li>8. Vertical T-profile</li> <li>9. Blind rivet</li> </ul> | <ul style="list-style-type: none"> <li>10. Insulation</li> <li>11. Panel</li> <li>12. A/V barrier</li> <li>13. Exterior wall</li> <li>14. Outer corner closure</li> <li>15. Inner corner closure</li> <li>16. Jamb closure</li> <li>17. Aluminum angle</li> <li>18. Coping</li> </ul> | <ul style="list-style-type: none"> <li>19. Perforated window head closure</li> <li>20. Window sill</li> <li>21. Perforated base closure</li> </ul> <p>D - System depth<br/>t - Panel thickness<br/>* Ventilation will vary based on insulation depth.<br/>** Minimum ventilation requirement should be qualified by panel manufacturer.</p> |
|--|---|---|

# Vertical joint



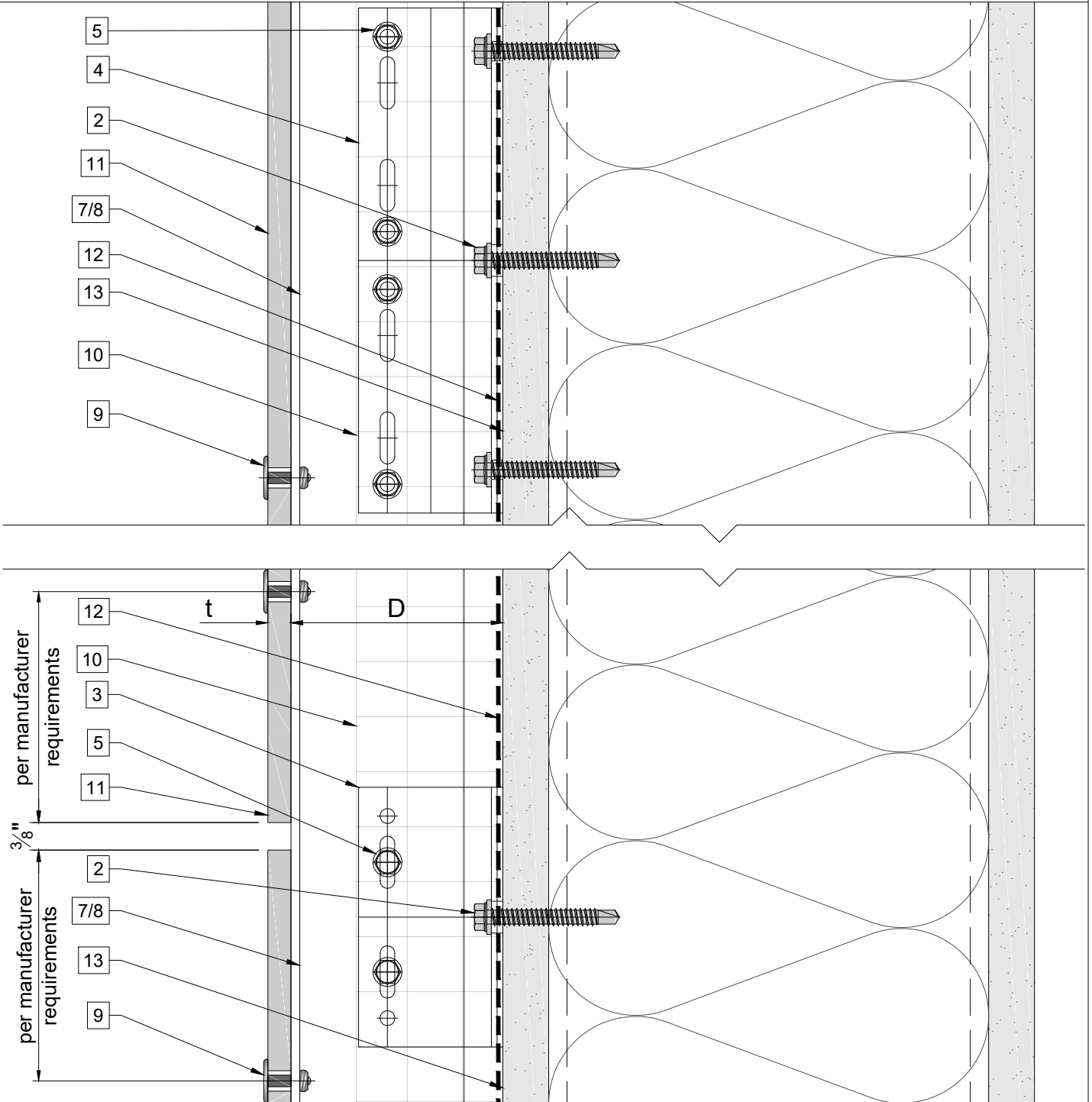
## Legend

1. Steel stud (16 GA typical)
2. Perimeter anchor
3. Alpha V wall bracket
4. Alpha V+ wall bracket
5. st/st self-drilling screw  $\frac{3}{16} \times \frac{3}{4}$ "
6. st/st self-drilling screw  $\frac{1}{4} \times \frac{3}{4}$ "
7. Vertical L-profile
8. Vertical T-profile
9. Blind rivet

10. Insulation
11. Panel
12. A/V barrier
13. Exterior wall
14. Outer corner closure
15. Inner corner closure
16. Jamb closure
17. Aluminum angle
18. Coping

19. Perforated window head closure
  20. Window sill
  21. Perforated base closure
- D - System depth  
t - Panel thickness  
\* Ventilation will vary based on insulation depth.  
\*\* Minimum ventilation requirement should be qualified by panel manufacturer.

# Horizontal joint

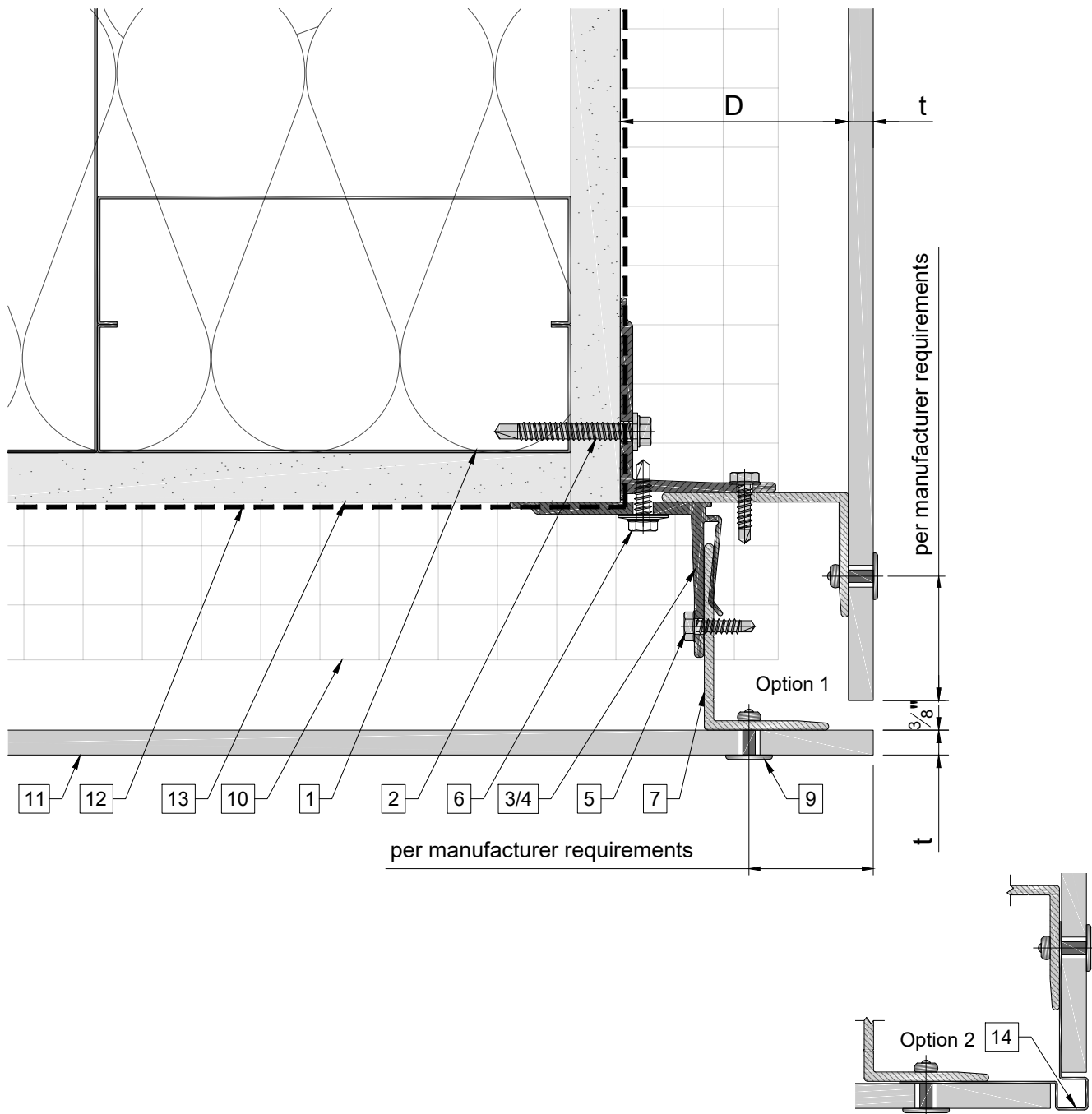


**Legend**

- 1. Steel stud (16 GA typical)
- 2. Perimeter anchor
- 3. Alpha V wall bracket
- 4. Alpha V+ wall bracket
- 5. st/st self-drilling screw  $\frac{3}{16} \times \frac{3}{4}$ "
- 6. st/st self-drilling screw  $\frac{1}{4} \times \frac{3}{4}$ "
- 7. Vertical L-profile
- 8. Vertical T-profile
- 9. Blind rivet

- 10. Insulation
- 11. Panel
- 12. A/V barrier
- 13. Exterior wall
- 14. Outer corner closure
- 15. Inner corner closure
- 16. Jamb closure
- 17. Aluminum angle
- 18. Coping

- 19. Perforated window head closure
  - 20. Window sill
  - 21. Perforated base closure
- D - System depth  
t - Panel thickness
- \* Ventilation will vary based on insulation depth.  
\*\* Minimum ventilation requirement should be qualified by panel manufacturer.

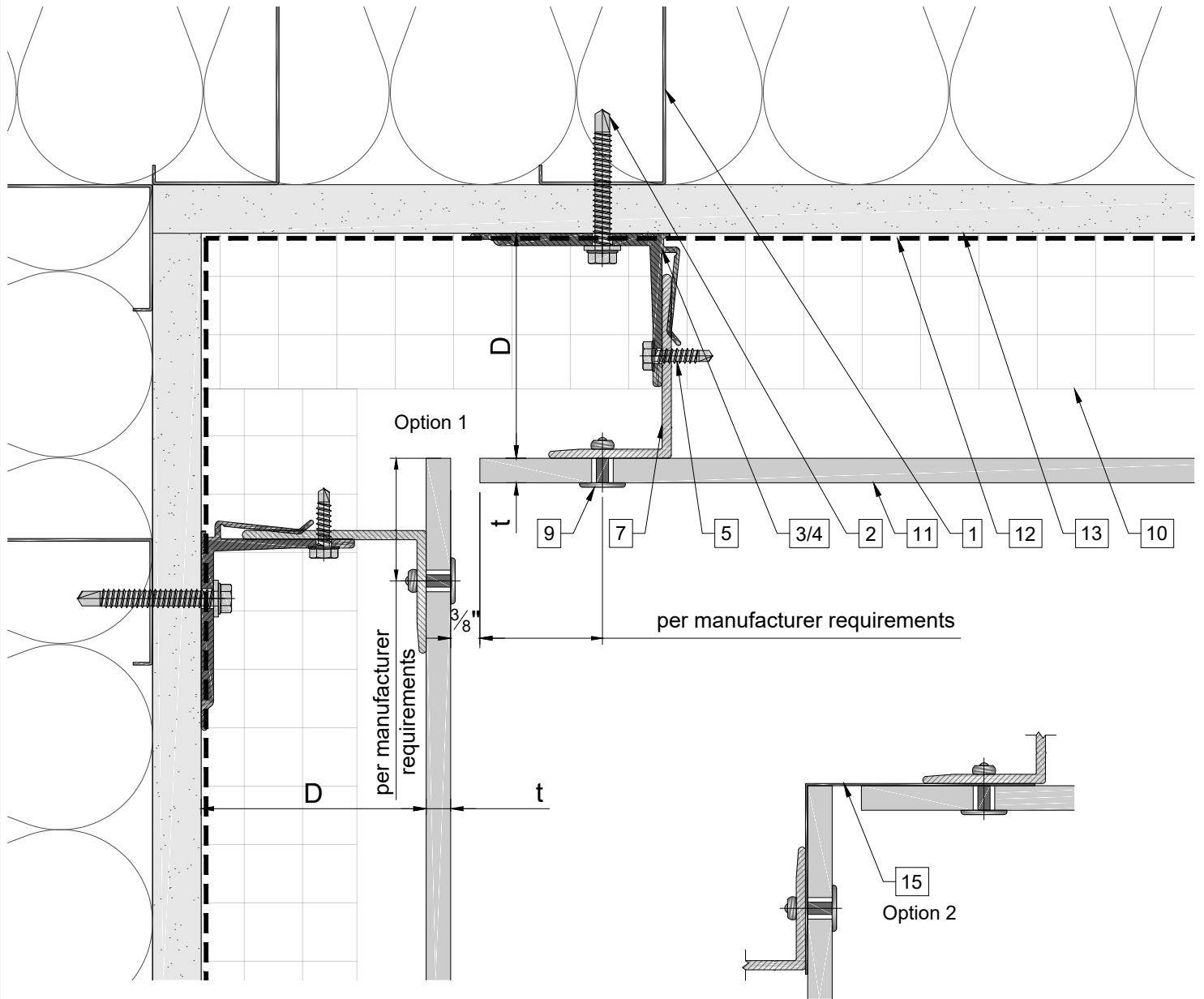


**Legend**

- 1. Steel stud (16 GA typical)
- 2. Perimeter anchor
- 3. Alpha V wall bracket
- 4. Alpha V+ wall bracket
- 5. st/st self-drilling screw  $\frac{3}{16}'' \times \frac{3}{4}''$
- 6. st/st self-drilling screw  $\frac{1}{4}'' \times \frac{3}{4}''$
- 7. Vertical L-profile
- 8. Vertical T-profile
- 9. Blind rivet

- 10. Insulation
- 11. Panel
- 12. A/V barrier
- 13. Exterior wall
- 14. Outer corner closure
- 15. Inner corner closure
- 16. Jamb closure
- 17. Aluminum angle
- 18. Coping

- 19. Perforated window head closure
  - 20. Window sill
  - 21. Perforated base closure
- D - System depth  
 t - Panel thickness  
 \* Ventilation will vary based on insulation depth.  
 \*\* Minimum ventilation requirement should be qualified by panel manufacturer.

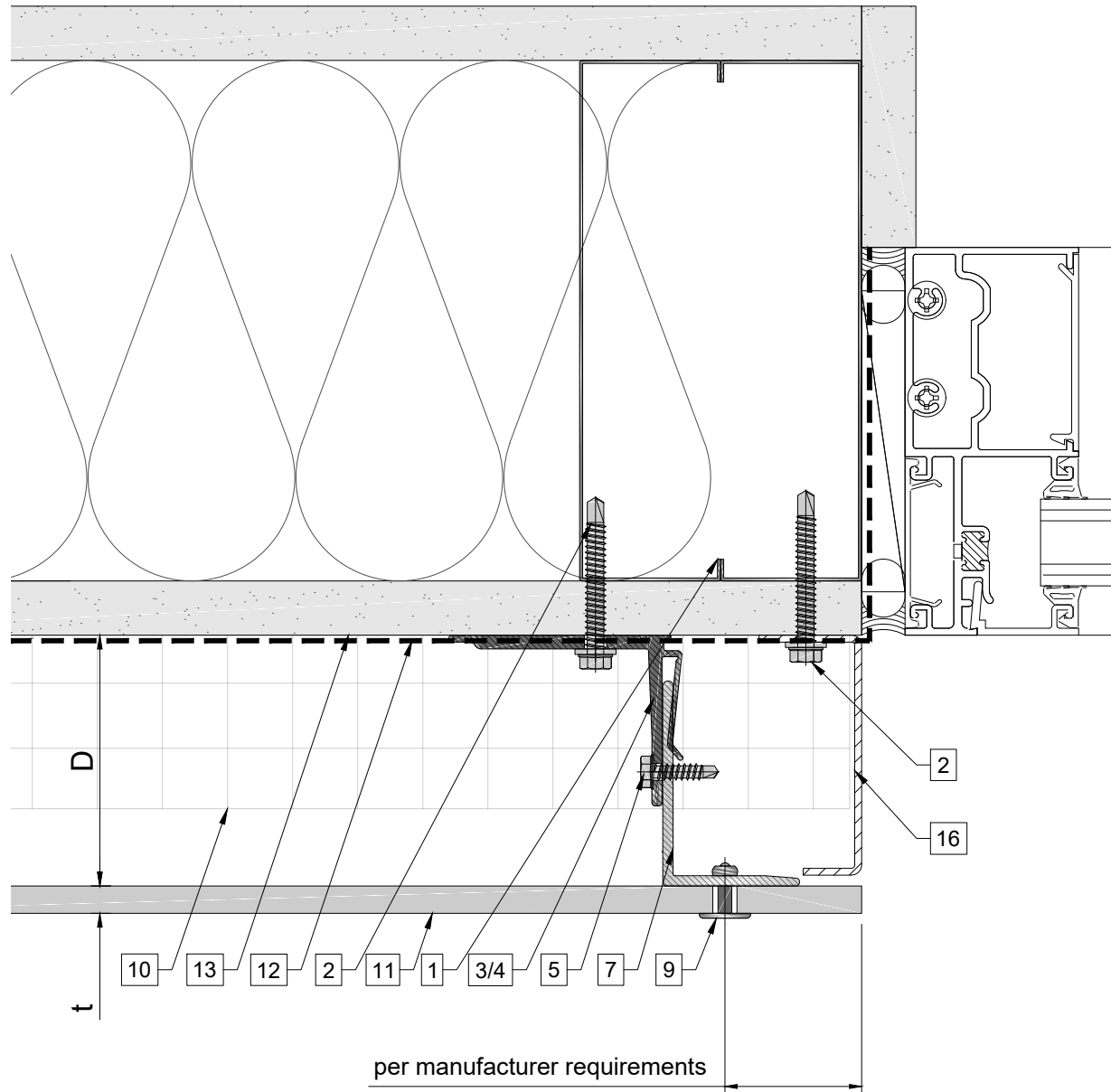


**Legend**

- 1. Steel stud (16 GA typical)
- 2. Perimeter anchor
- 3. Alpha V wall bracket
- 4. Alpha V+ wall bracket
- 5. st/st self-drilling screw  $\frac{3}{16} \times \frac{3}{4}$ "
- 6. st/st self-drilling screw  $\frac{1}{4} \times \frac{3}{4}$ "
- 7. Vertical L-profile
- 8. Vertical T-profile
- 9. Blind rivet

- 10. Insulation
- 11. Panel
- 12. A/V barrier
- 13. Exterior wall
- 14. Outer corner closure
- 15. Inner corner closure
- 16. Jamb closure
- 17. Aluminum angle
- 18. Coping

- 19. Perforated window head closure
  - 20. Window sill
  - 21. Perforated base closure
- D - System depth  
 t - Panel thickness  
 \* Ventilation will vary based on insulation depth.  
 \*\* Minimum ventilation requirement should be qualified by panel manufacturer.



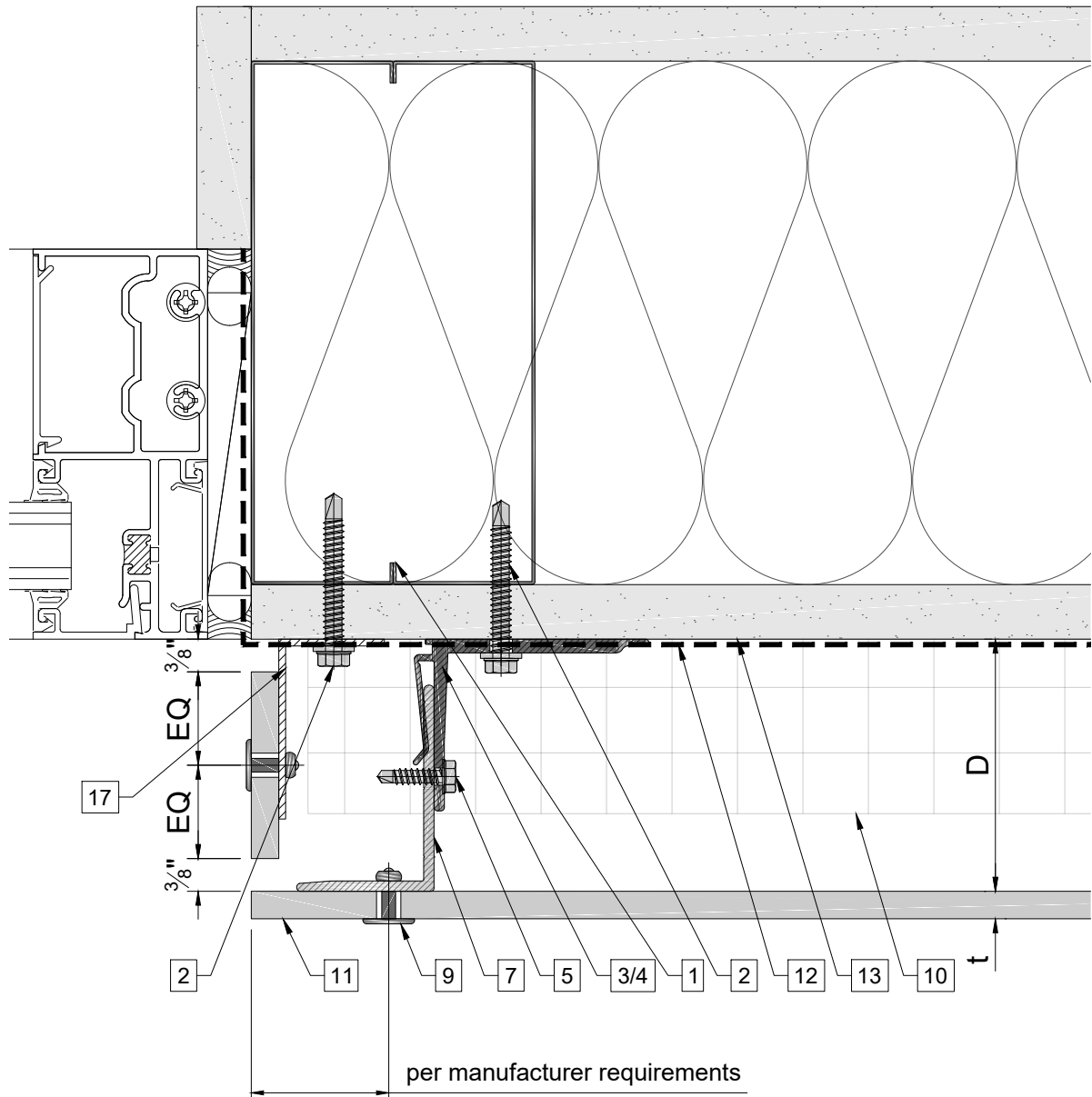
**Legend**

- 1. Steel stud (16 GA typical)
- 2. Perimeter anchor
- 3. Alpha V wall bracket
- 4. Alpha V+ wall bracket
- 5. st/st self-drilling screw  $\frac{3}{16}'' \times \frac{3}{4}''$
- 6. st/st self-drilling screw  $\frac{1}{4}'' \times \frac{3}{4}''$
- 7. Vertical L-profile
- 8. Vertical T-profile
- 9. Blind rivet

- 10. Insulation
- 11. Panel
- 12. A/V barrier
- 13. Exterior wall
- 14. Outer corner closure
- 15. Inner corner closure
- 16. Jamb closure
- 17. Aluminum angle
- 18. Coping

- 19. Perforated window head closure
  - 20. Window sill
  - 21. Perforated base closure
- D - System depth  
t - Panel thickness  
\* Ventilation will vary based on insulation depth.  
\*\* Minimum ventilation requirement should be qualified by panel manufacturer.



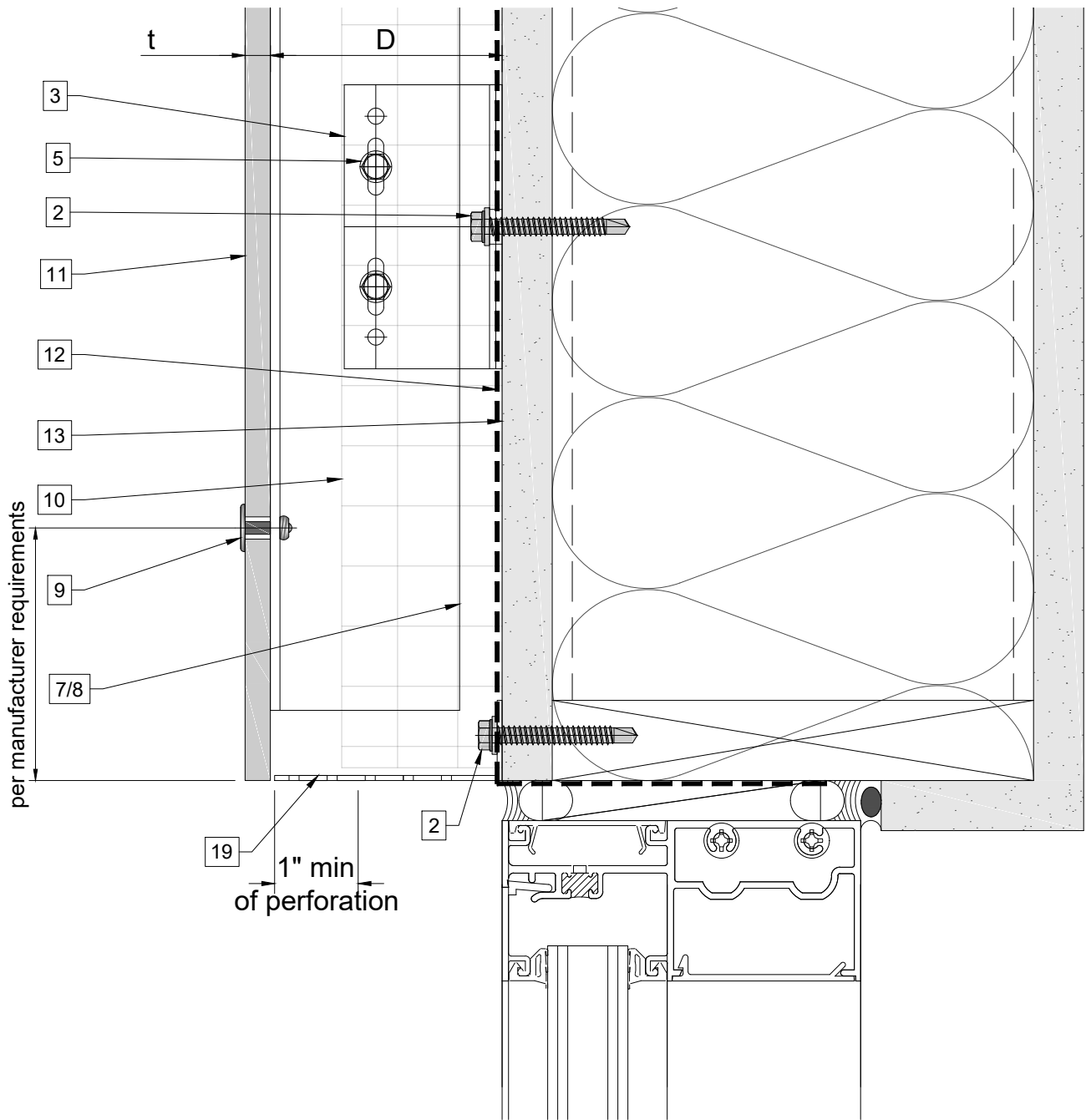


**Legend**

- 1. Steel stud (16 GA typical)
- 2. Perimeter anchor
- 3. Alpha V wall bracket
- 4. Alpha V+ wall bracket
- 5. st/st self-drilling screw  $\frac{3}{16} \times \frac{3}{4}$ "
- 6. st/st self-drilling screw  $\frac{1}{4} \times \frac{3}{4}$ "
- 7. Vertical L-profile
- 8. Vertical T-profile
- 9. Blind rivet

- 10. Insulation
- 11. Panel
- 12. A/V barrier
- 13. Exterior wall
- 14. Outer corner closure
- 15. Inner corner closure
- 16. Jamb closure
- 17. Aluminum angle
- 18. Coping

- 19. Perforated window head closure
  - 20. Window sill
  - 21. Perforated base closure
- D - System depth  
 t - Panel thickness  
 \* Ventilation will vary based on insulation depth.  
 \*\* Minimum ventilation requirement should be qualified by panel manufacturer.

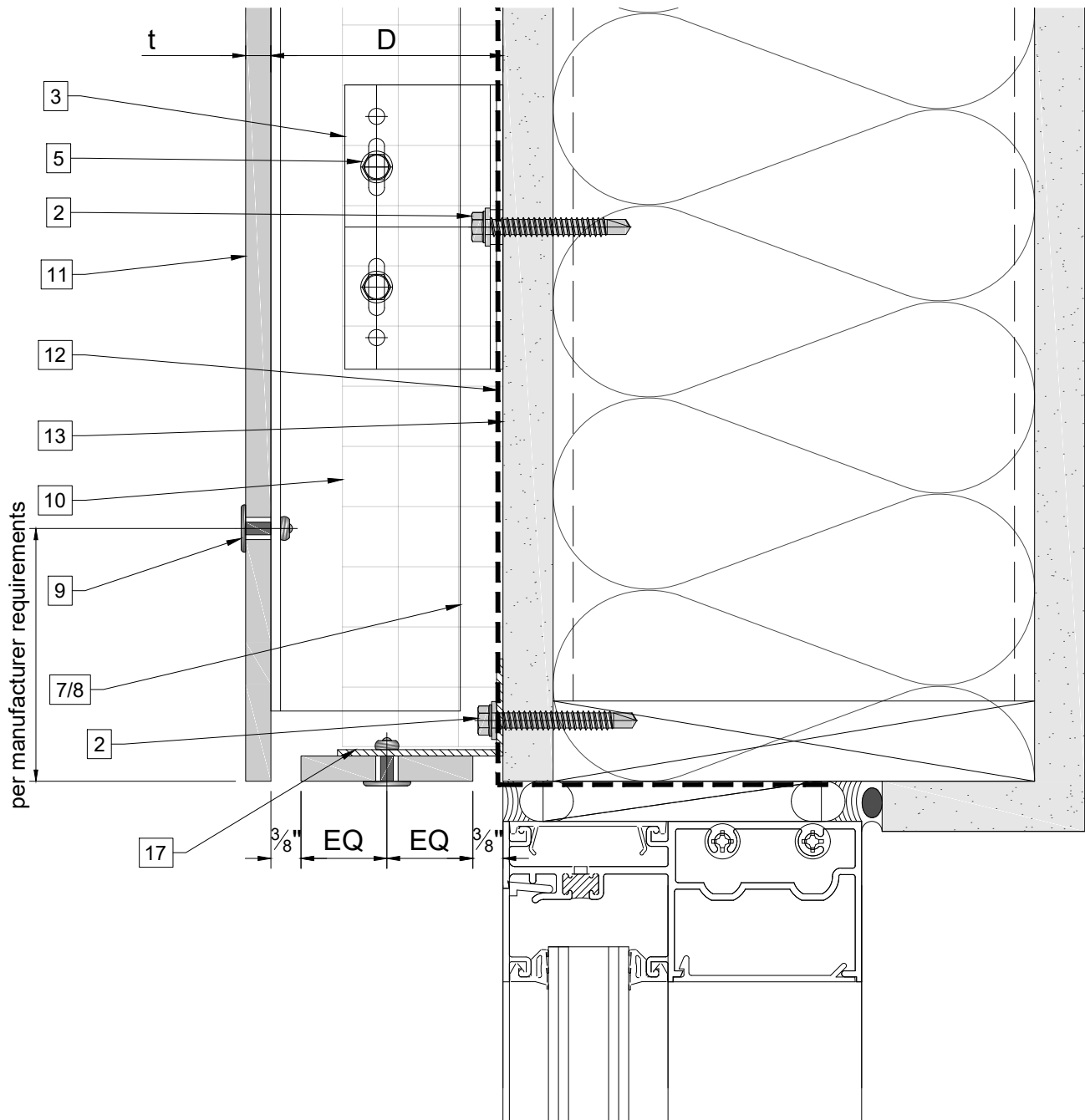


**Legend**

1. Steel stud (16 GA typical)
2. Perimeter anchor
3. Alpha V wall bracket
4. Alpha V+ wall bracket
5. st/st self-drilling screw  $\frac{3}{16}'' \times \frac{3}{4}''$
6. st/st self-drilling screw  $\frac{1}{4}'' \times \frac{3}{4}''$
7. Vertical L-profile
8. Vertical T-profile
9. Blind rivet

10. Insulation
11. Panel
12. A/V barrier
13. Exterior wall
14. Outer corner closure
15. Inner corner closure
16. Jamb closure
17. Aluminum angle
18. Coping

19. Perforated window head closure
  20. Window sill
  21. Perforated base closure
- D - System depth  
t - Panel thickness  
\* Ventilation will vary based on insulation depth.  
\*\* Minimum ventilation requirement should be qualified by panel manufacturer.

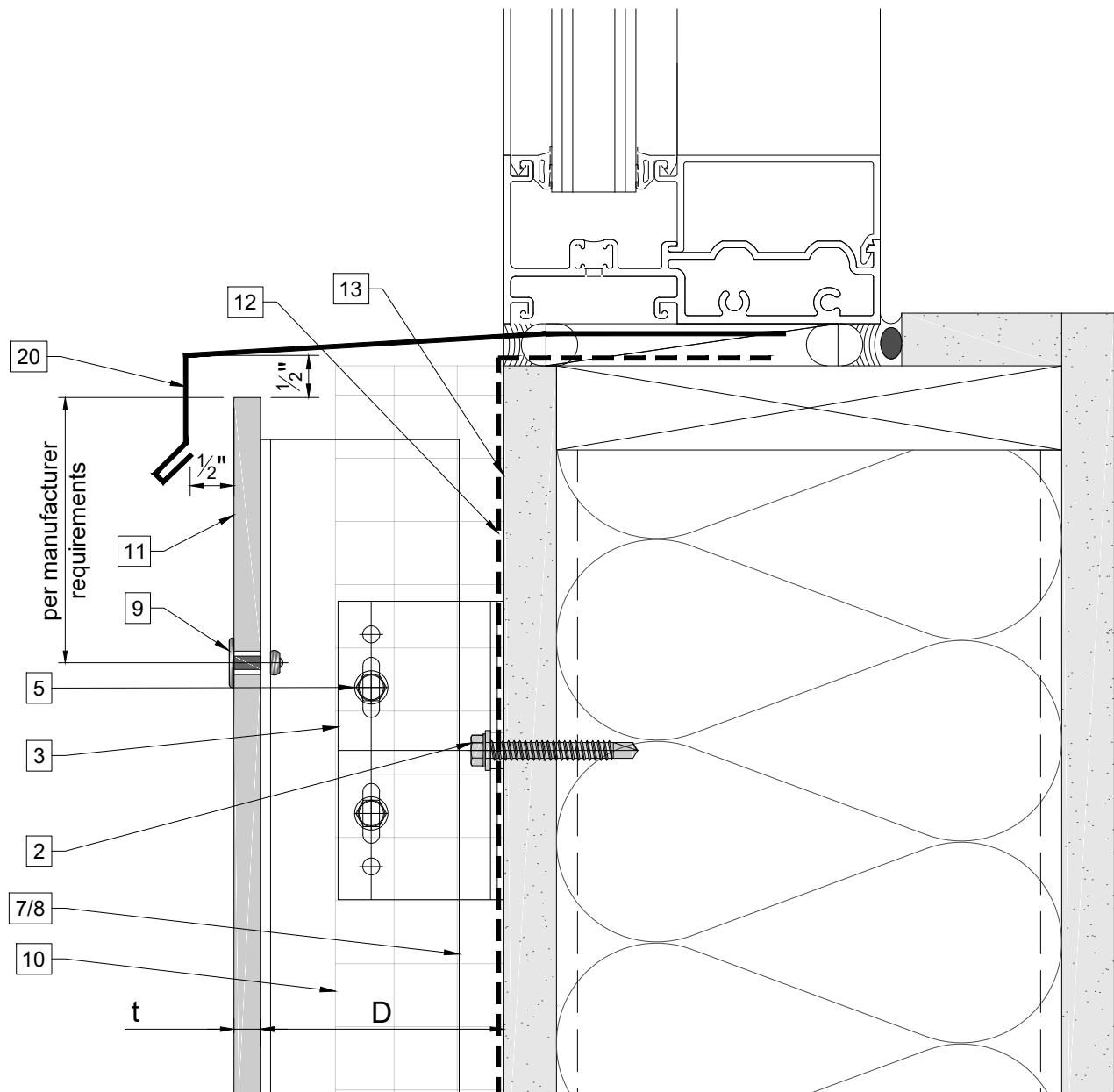


**Legend**

- 1. Steel stud (16 GA typical)
- 2. Perimeter anchor
- 3. Alpha V wall bracket
- 4. Alpha V+ wall bracket
- 5. st/st self-drilling screw  $\frac{3}{16}'' \times \frac{3}{4}''$
- 6. st/st self-drilling screw  $\frac{1}{4}'' \times \frac{3}{4}''$
- 7. Vertical L-profile
- 8. Vertical T-profile
- 9. Blind rivet

- 10. Insulation
- 11. Panel
- 12. A/V barrier
- 13. Exterior wall
- 14. Outer corner closure
- 15. Inner corner closure
- 16. Jamb closure
- 17. Aluminum angle
- 18. Coping

- 19. Perforated window head closure
  - 20. Window sill
  - 21. Perforated base closure
- D - System depth  
 t - Panel thickness  
 \* Ventilation will vary based on insulation depth.  
 \*\* Minimum ventilation requirement should be qualified by panel manufacturer.

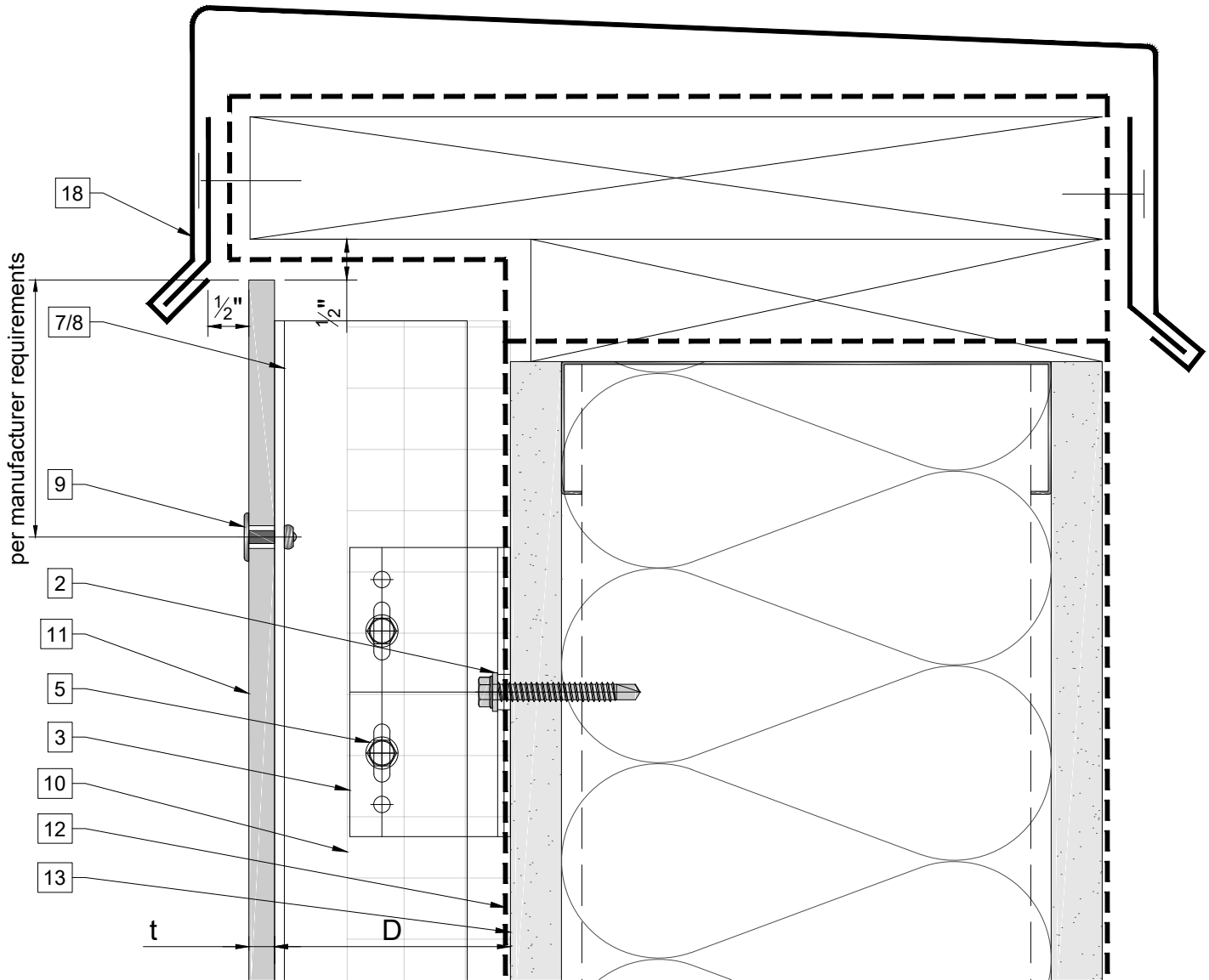


**Legend**

- 1. Steel stud (16 GA typical)
- 2. Perimeter anchor
- 3. Alpha V wall bracket
- 4. Alpha V+ wall bracket
- 5. st/st self-drilling screw  $\frac{3}{16}'' \times \frac{3}{4}''$
- 6. st/st self-drilling screw  $\frac{1}{4}'' \times \frac{3}{4}''$
- 7. Vertical L-profile
- 8. Vertical T-profile
- 9. Blind rivet

- 10. Insulation
- 11. Panel
- 12. A/V barrier
- 13. Exterior wall
- 14. Outer corner closure
- 15. Inner corner closure
- 16. Jamb closure
- 17. Aluminum angle
- 18. Coping

- 19. Perforated window head closure
- 20. Window sill
- 21. Perforated base closure
- D - System depth
- t - Panel thickness
- \* Ventilation will vary based on insulation depth.
- \*\* Minimum ventilation requirement should be qualified by panel manufacturer.

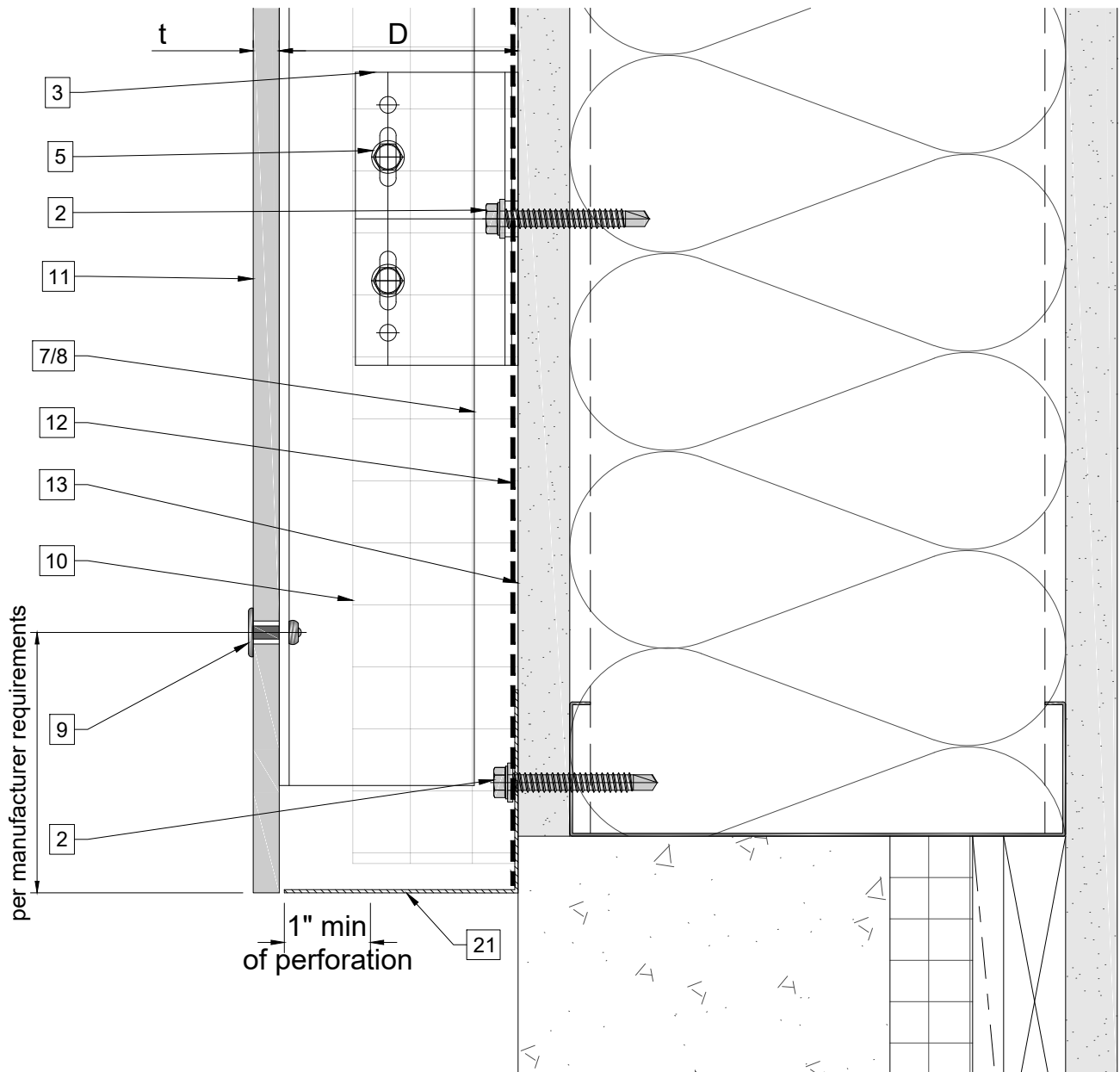


**Legend**

- 1. Steel stud (16 GA typical)
- 2. Perimeter anchor
- 3. Alpha V wall bracket
- 4. Alpha V+ wall bracket
- 5. st/st self-drilling screw  $\frac{3}{16}'' \times \frac{3}{4}''$
- 6. st/st self-drilling screw  $\frac{1}{4}'' \times \frac{3}{4}''$
- 7. Vertical L-profile
- 8. Vertical T-profile
- 9. Blind rivet

- 10. Insulation
- 11. Panel
- 12. A/V barrier
- 13. Exterior wall
- 14. Outer corner closure
- 15. Inner corner closure
- 16. Jamb closure
- 17. Aluminum angle
- 18. Coping

- 19. Perforated window head closure
- 20. Window sill
- 21. Perforated base closure
- D - System depth
- t - Panel thickness
- \* Ventilation will vary based on insulation depth.
- \*\* Minimum ventilation requirement should be qualified by panel manufacturer.



**Legend**

- 1. Steel stud (16 GA typical)
- 2. Perimeter anchor
- 3. Alpha V wall bracket
- 4. Alpha V+ wall bracket
- 5. st/st self-drilling screw  $\frac{3}{16}'' \times \frac{3}{4}''$
- 6. st/st self-drilling screw  $\frac{1}{4}'' \times \frac{3}{4}''$
- 7. Vertical L-profile
- 8. Vertical T-profile
- 9. Blind rivet

- 10. Insulation
- 11. Panel
- 12. A/V barrier
- 13. Exterior wall
- 14. Outer corner closure
- 15. Inner corner closure
- 16. Jamb closure
- 17. Aluminum angle
- 18. Coping

- 19. Perforated window head closure
  - 20. Window sill
  - 21. Perforated base closure
- D - System depth  
 t - Panel thickness  
 \* Ventilation will vary based on insulation depth.  
 \*\* Minimum ventilation requirement should be qualified by panel manufacturer.