

### System depth

Bracket	min. D system depth	max. D system depth	R	t panel thickness
Alpha V 035 / Alpha V+ 035	2 <sup>3</sup> / <sub>4</sub> " (70mm)	3 <sup>7</sup> / <sub>8</sub> " (98mm)	<sup>7</sup> / <sub>8</sub> " (23mm)	varies
Alpha V 050 / Alpha V+ 050	3" (76mm)	4 <sup>7</sup> / <sub>16</sub> " (113mm)	<sup>7</sup> / <sub>8</sub> " (23mm)	varies
Alpha V 080 / Alpha V+ 080	4 <sup>3</sup> / <sub>16</sub> " (106mm)	5 <sup>5</sup> / <sub>8</sub> " (143mm)	<sup>7</sup> / <sub>8</sub> " (23mm)	varies
Alpha V 100 / Alpha V+ 100	4 <sup>15</sup> / <sub>16</sub> " (126mm)	6 <sup>7</sup> / <sub>16</sub> " (163mm)	<sup>7</sup> / <sub>8</sub> " (23mm)	varies
Alpha V 115 / Alpha V+ 115	5 <sup>9</sup> / <sub>16</sub> " (141mm)	7" (178mm)	<sup>7</sup> / <sub>8</sub> " (23mm)	varies
Alpha V 135 / Alpha V+ 135	6 <sup>5</sup> / <sub>16</sub> " (161mm)	7 <sup>13</sup> / <sub>16</sub> " (198mm)	<sup>7</sup> / <sub>8</sub> " (23mm)	varies
Alpha V 150 / Alpha V+ 150	6 <sup>15</sup> / <sub>16</sub> " (176mm)	8 <sup>3</sup> / <sub>8</sub> " (213mm)	<sup>7</sup> / <sub>8</sub> " (23mm)	varies
Alpha V 170 / Alpha V+ 170	7 <sup>11</sup> / <sub>16</sub> " (196mm)	9 <sup>3</sup> / <sub>16</sub> " (233mm)	<sup>7</sup> / <sub>8</sub> " (23mm)	varies
Alpha V 185 / Alpha V+ 185	8 <sup>5</sup> / <sub>16</sub> " (211mm)	9 <sup>3</sup> / <sub>4</sub> " (248mm)	<sup>7</sup> / <sub>8</sub> " (23mm)	varies
Alpha V 200 / Alpha V+ 200	8 <sup>7</sup> / <sub>8</sub> " (226mm)	10 <sup>3</sup> / <sub>8</sub> " (263mm)	<sup>7</sup> / <sub>8</sub> " (23mm)	varies
Alpha V 220 / Alpha V+ 220	9 <sup>11</sup> / <sub>16</sub> " (246mm)	11 <sup>1</sup> / <sub>8</sub> " (283mm)	<sup>7</sup> / <sub>8</sub> " (23mm)	varies
Alpha V 255 / Alpha V+ 255	11 <sup>1</sup> / <sub>16</sub> " (281mm)	1'-10 <sup>1</sup> / <sub>2</sub> " (318mm)	<sup>7</sup> / <sub>8</sub> " (23mm)	varies

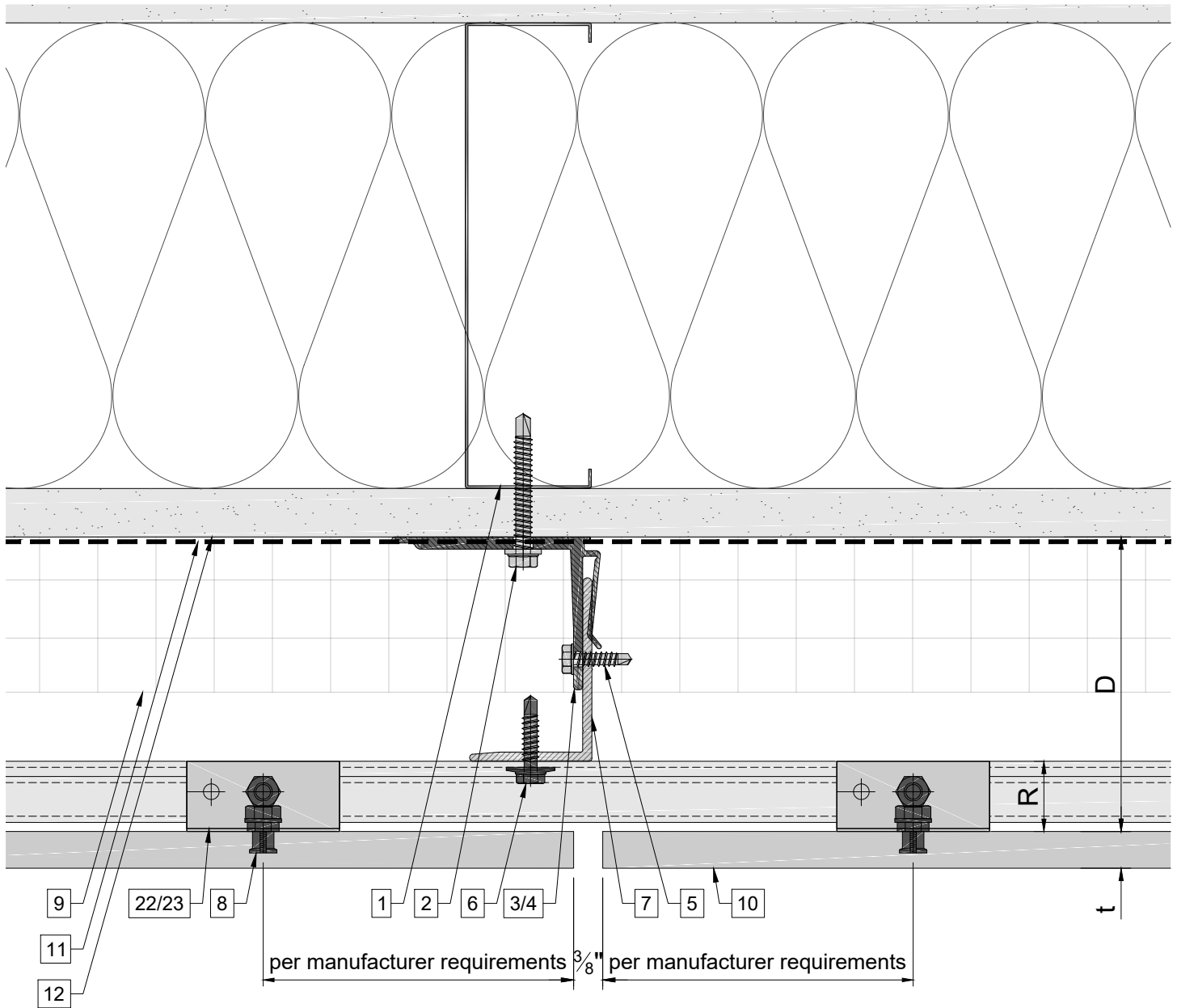
#### Legend

1. Steel stud (16 GA typical)
2. Perimeter anchor
3. Alpha V wall bracket
4. Alpha V+ wall bracket
5. st/st self-drilling screw  $\frac{3}{16}" \times \frac{3}{4}"$
6. st/st self-drilling screw  $\frac{1}{4}" \times 1"$
7. Vertical L-profile
8. Undercut anchor
9. Insulation
10. Panel
11. A/V barrier

12. Exterior wall
13. Outer corner closure
14. Inner corner closure
15. Jamb closure
16. Horizontal L-profile
17. Coping
18. Perforated window head closure
19. Window sill
20. Perforated base closure
21. C-carrier rail

22. C-hanger, adjustable
  23. C-hanger, non-adjustable
  24. Leveling bolt M6
  25. Fixing screw  $\frac{3}{16}" \times 1"$
  26. Rivet
- D - System depth  
t - Panel thickness  
R - C-carrier rail and C-hanger

- \* Ventilation will vary based on insulation depth.
- \*\* Minimum ventilation requirement should be qualified by panel manufacturer.
- \*\*\* One of adjustable C-hangers per panel to be fixed with fixing screw  $\frac{3}{16}" \times 1"$



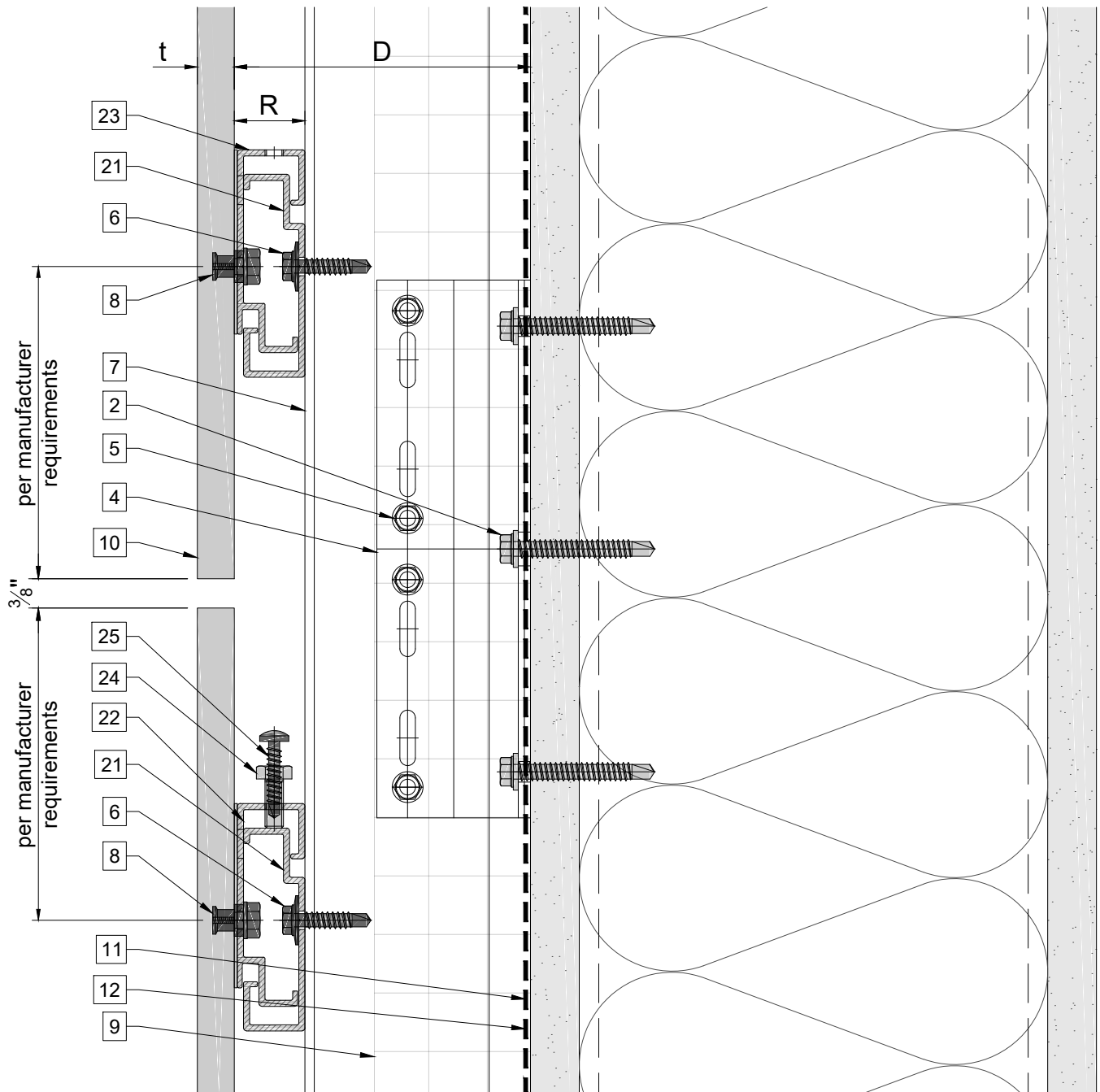
### Legend

- 1. Steel stud (16 GA typical)
- 2. Perimeter anchor
- 3. Alpha V wall bracket
- 4. Alpha V+ wall bracket
- 5. st/st self-drilling screw  $\frac{3}{16}$ "x $\frac{3}{4}$ "
- 6. st/st self-drilling screw  $\frac{1}{4}$ "x1"
- 7. Vertical L-profile
- 8. Undercut anchor
- 9. Insulation
- 10. Panel
- 11. A/V barrier

- 12. Exterior wall
- 13. Outer corner closure
- 14. Inner corner closure
- 15. Jamb closure
- 16. Horizontal L-profile
- 17. Coping
- 18. Perforated window head closure
- 19. Window sill
- 20. Perforated base closure
- 21. C-carrier rail

- 22. C-hanger, adjustable
- 23. C-hanger, non-adjustable
- 24. Leveling bolt M6
- 25. Fixing screw  $\frac{3}{16}$ "x1"
- 26. Rivet
- D - System depth
- t - Panel thickness
- R - C-carrier rail and C-hanger

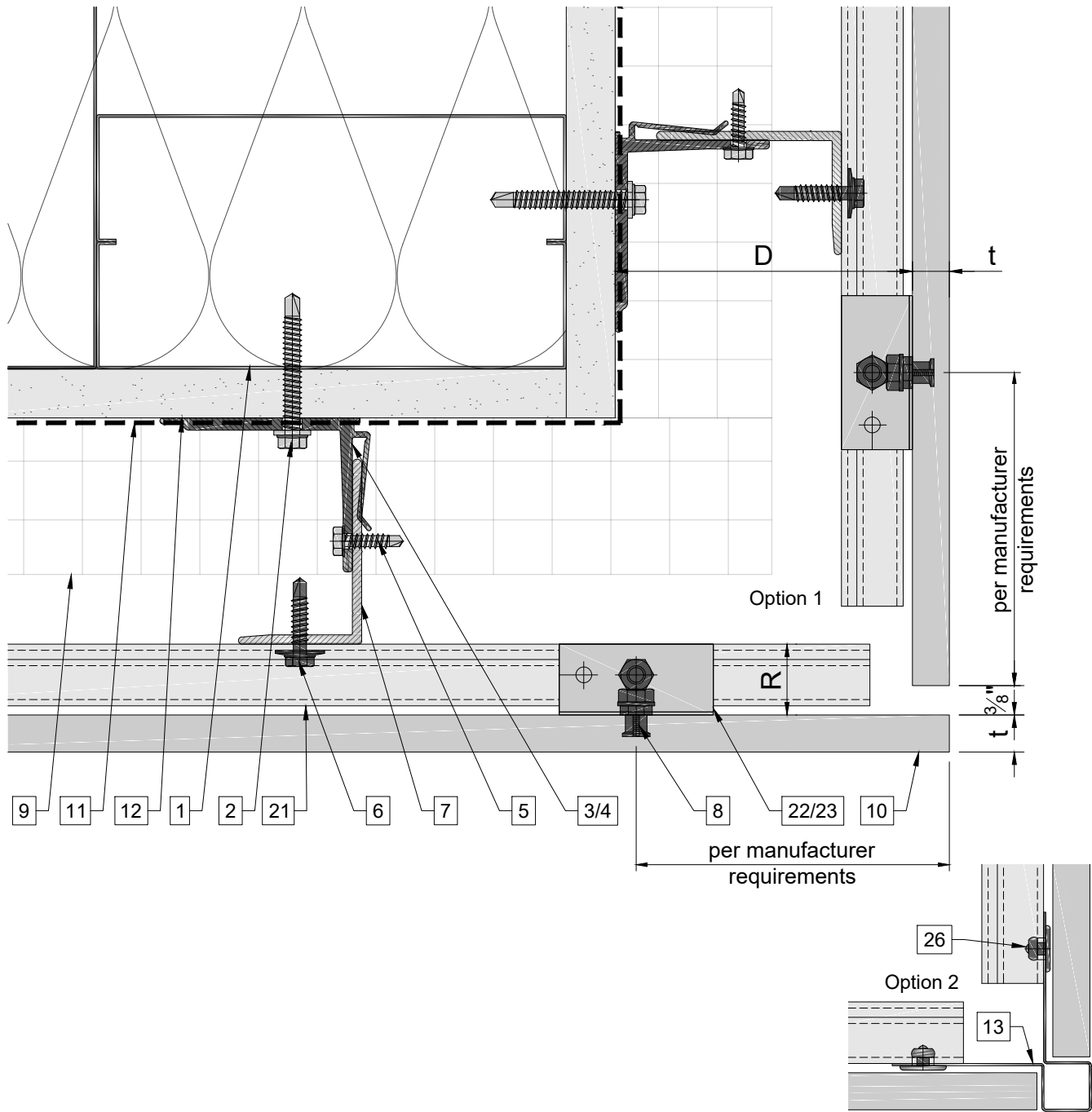
\* Ventilation will vary based on insulation depth.  
 \*\* Minimum ventilation requirement should be qualified by panel manufacturer.  
 \*\*\* One of adjustable C-hangers per panel to be fixed with fixing screw  $\frac{3}{16}$ "x1"



**Legend**

- |   |   |   |
|---|---|---|
| <ol style="list-style-type: none"> <li>1. Steel stud (16 GA typical)</li> <li>2. Perimeter anchor</li> <li>3. Alpha V wall bracket</li> <li>4. Alpha V+ wall bracket</li> <li>5. st/st self-drilling screw <math>\frac{3}{16}</math>"x<math>\frac{3}{4}</math>"</li> <li>6. st/st self-drilling screw <math>\frac{1}{4}</math>"x1"</li> <li>7. Vertical L-profile</li> <li>8. Undercut anchor</li> <li>9. Insulation</li> <li>10. Panel</li> <li>11. A/V barrier</li> </ol> | <ol style="list-style-type: none"> <li>12. Exterior wall</li> <li>13. Outer corner closure</li> <li>14. Inner corner closure</li> <li>15. Jamb closure</li> <li>16. Horizontal L-profile</li> <li>17. Coping</li> <li>18. Perforated window head closure</li> <li>19. Window sill</li> <li>20. Perforated base closure</li> <li>21. C-carrier rail</li> </ol> | <ol style="list-style-type: none"> <li>22. C-hanger, adjustable</li> <li>23. C-hanger, non-adjustable</li> <li>24. Leveling bolt M6</li> <li>25. Fixing screw <math>\frac{3}{16}</math>"x1"</li> <li>26. Rivet</li> </ol> <p>D - System depth<br/>t - Panel thickness<br/>R - C-carrier rail and C-hanger</p> |
|---|---|---|

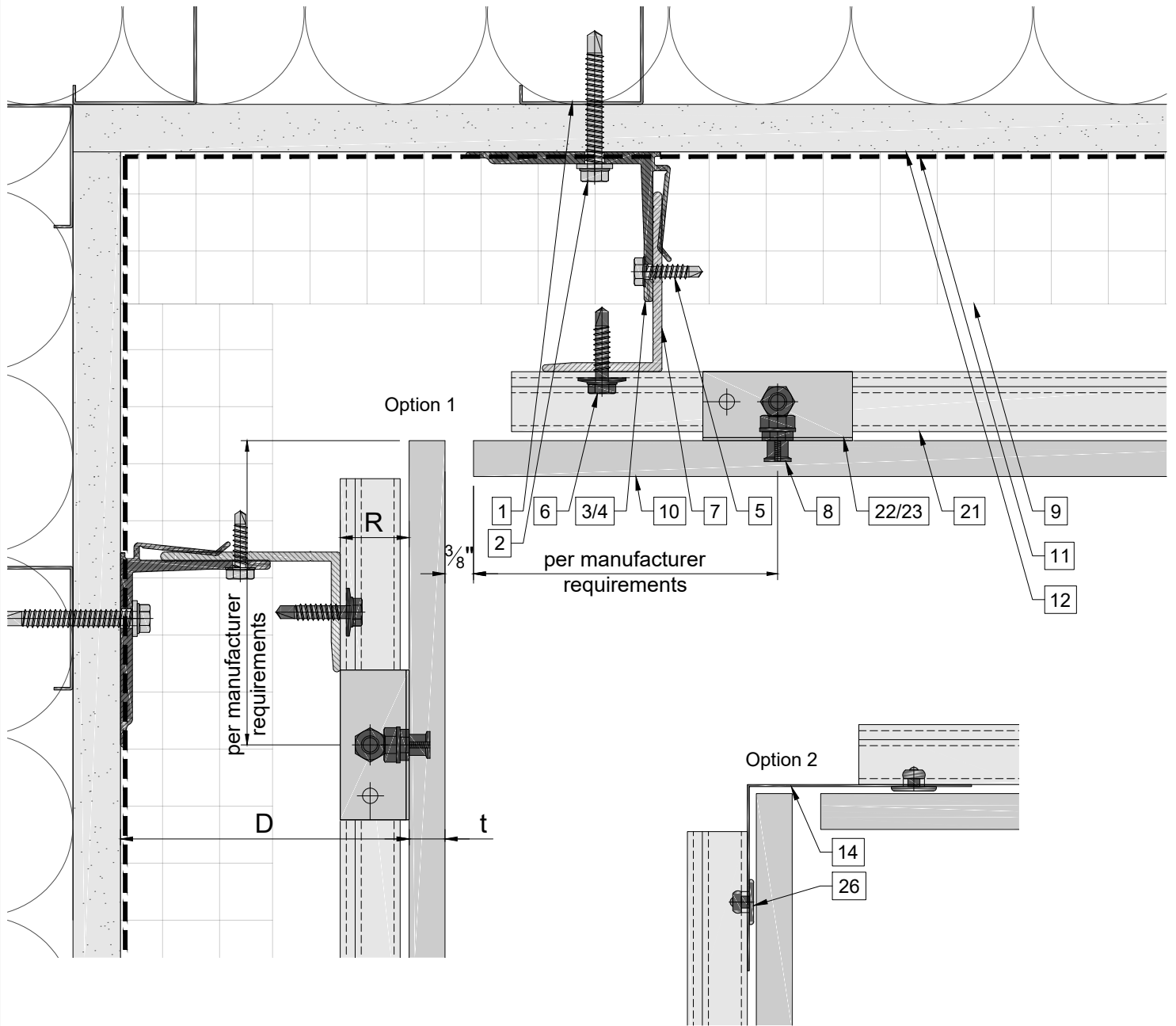
- \* Ventilation will vary based on insulation depth.
- \*\* Minimum ventilation requirement should be qualified by panel manufacturer.
- \*\*\* One of adjustable C-hangers per panel to be fixed with fixing screw  $\frac{3}{16}$ "x1"



**Legend**

- |  |                                    |                                      |
|--|------------------------------------|--------------------------------------|
| 1. Steel stud (16 GA typical)                                  | 12. Exterior wall                  | 22. C-hanger, adjustable             |
| 2. Perimeter anchor  | 13. Outer corner closure           | 23. C-hanger, non-adjustable         |
| 3. Alpha V wall bracket  | 14. Inner corner closure           | 24. Leveling bolt M6                 |
| 4. Alpha V+ wall bracket                                       | 15. Jamb closure                   | 25. Fixing screw $\frac{3}{16}$ "x1" |
| 5. st/st self-drilling screw $\frac{3}{16}$ "x $\frac{3}{4}$ " | 16. Horizontal L-profile           | 26. Rivet                            |
| 6. st/st self-drilling screw $\frac{1}{4}$ "x1"                | 17. Coping                         | D - System depth                     |
| 7. Vertical L-profile  | 18. Perforated window head closure | t - Panel thickness                  |
| 8. Undercut anchor   | 19. Window sill                    | R - C-carrier rail and C-hanger      |
| 9. Insulation  | 20. Perforated base closure        |                                      |
| 10. Panel  | 21. C-carrier rail                 |                                      |
| 11. A/V barrier  |                                    |                                      |

- \* Ventilation will vary based on insulation depth.
- \*\* Minimum ventilation requirement should be qualified by panel manufacturer.
- \*\*\* One of adjustable C-hangers per panel to be fixed with fixing screw  $\frac{3}{16}$ "x1"



**Legend**

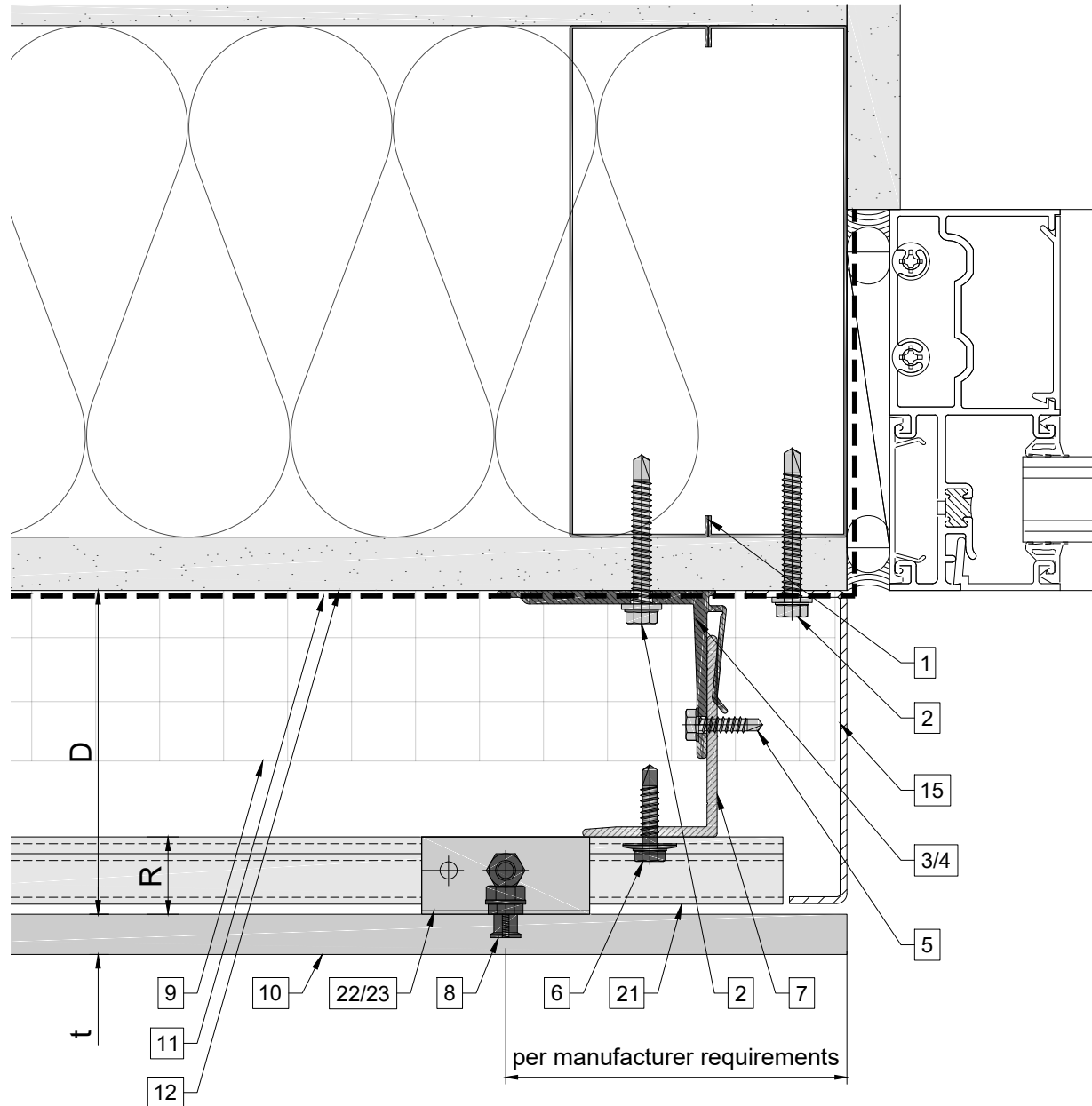
- 1. Steel stud (16 GA typical)
- 2. Perimeter anchor
- 3. Alpha V wall bracket
- 4. Alpha V+ wall bracket
- 5. st/st self-drilling screw  $\frac{3}{16}$ "x $\frac{3}{4}$ "
- 6. st/st self-drilling screw  $\frac{1}{4}$ "x1"
- 7. Vertical L-profile
- 8. Undercut anchor
- 9. Insulation
- 10. Panel
- 11. A/V barrier

- 12. Exterior wall
- 13. Outer corner closure
- 14. Inner corner closure
- 15. Jamb closure
- 16. Horizontal L-profile
- 17. Coping
- 18. Perforated window head closure
- 19. Window sill
- 20. Perforated base closure
- 21. C-carrier rail

- 22. C-hanger, adjustable
  - 23. C-hanger, non-adjustable
  - 24. Leveling bolt M6
  - 25. Fixing screw  $\frac{3}{16}$ "x1"
  - 26. Rivet
- D - System depth  
t - Panel thickness  
R - C-carrier rail and C-hanger

\* Ventilation will vary based on insulation depth.  
 \*\* Minimum ventilation requirement should be qualified by panel manufacturer.  
 \*\*\* One of adjustable C-hangers per panel to be fixed with fixing screw  $\frac{3}{16}$ "x1"

# Window jamb (option 1)



## Legend

- 1. Steel stud (16 GA typical)
- 2. Perimeter anchor
- 3. Alpha V wall bracket
- 4. Alpha V+ wall bracket
- 5. st/st self-drilling screw  $\frac{3}{16}'' \times \frac{3}{4}''$
- 6. st/st self-drilling screw  $\frac{1}{4}'' \times 1''$
- 7. Vertical L-profile
- 8. Undercut anchor
- 9. Insulation
- 10. Panel
- 11. A/V barrier

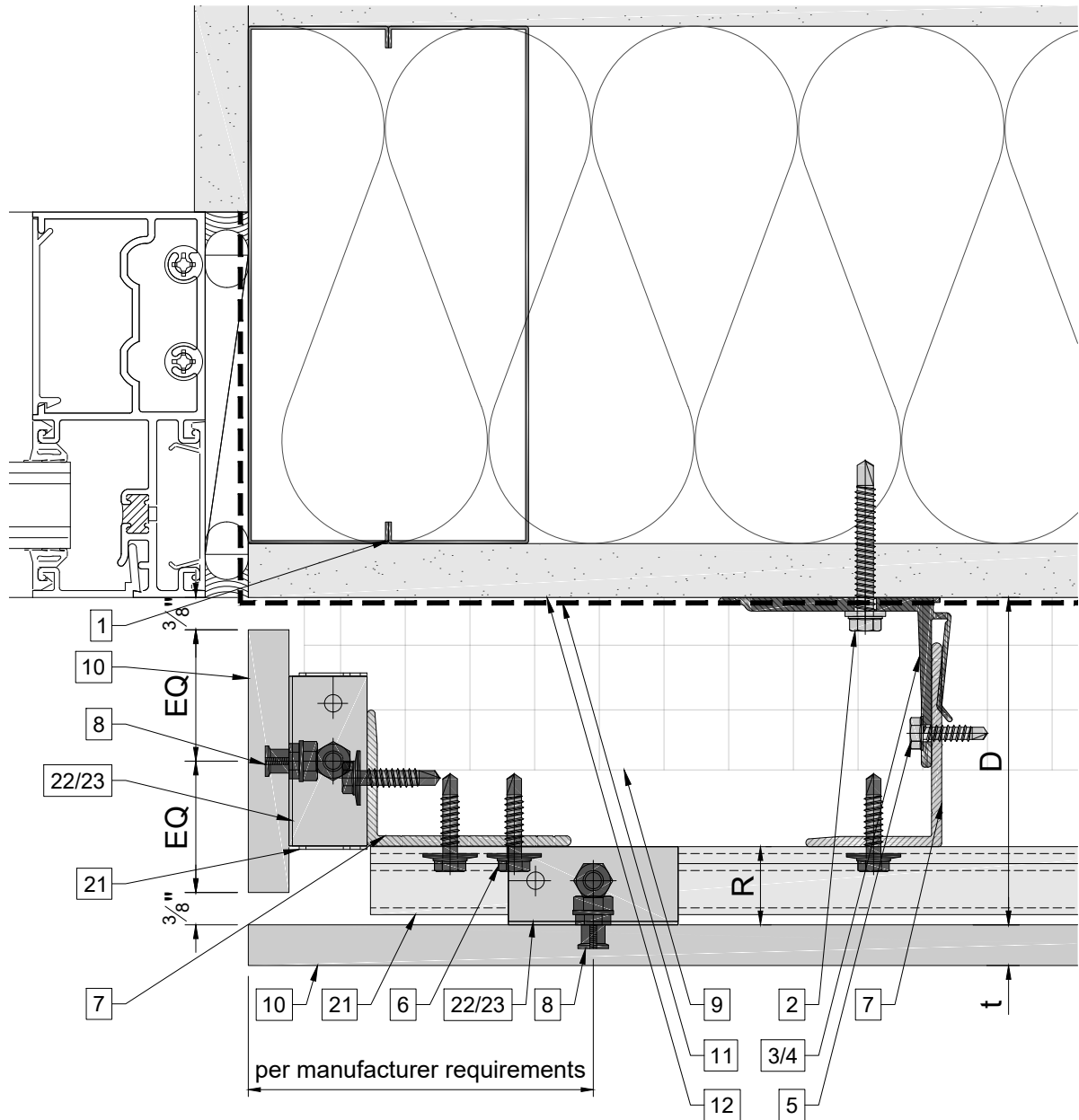
- 12. Exterior wall
- 13. Outer corner closure
- 14. Inner corner closure
- 15. Jamb closure
- 16. Horizontal L-profile
- 17. Coping
- 18. Perforated window head closure
- 19. Window sill
- 20. Perforated base closure
- 21. C-carrier rail

- 22. C-hanger, adjustable
  - 23. C-hanger, non-adjustable
  - 24. Leveling bolt M6
  - 25. Fixing screw  $\frac{3}{16}'' \times 1''$
  - 26. Rivet
- D - System depth  
t - Panel thickness  
R - C-carrier rail and C-hanger

\* Ventilation will vary based on insulation depth.  
 \*\* Minimum ventilation requirement should be qualified by panel manufacturer.  
 \*\*\* One of adjustable C-hangers per panel to be fixed with fixing screw  $\frac{3}{16}'' \times 1''$



# Window jamb (option 2)



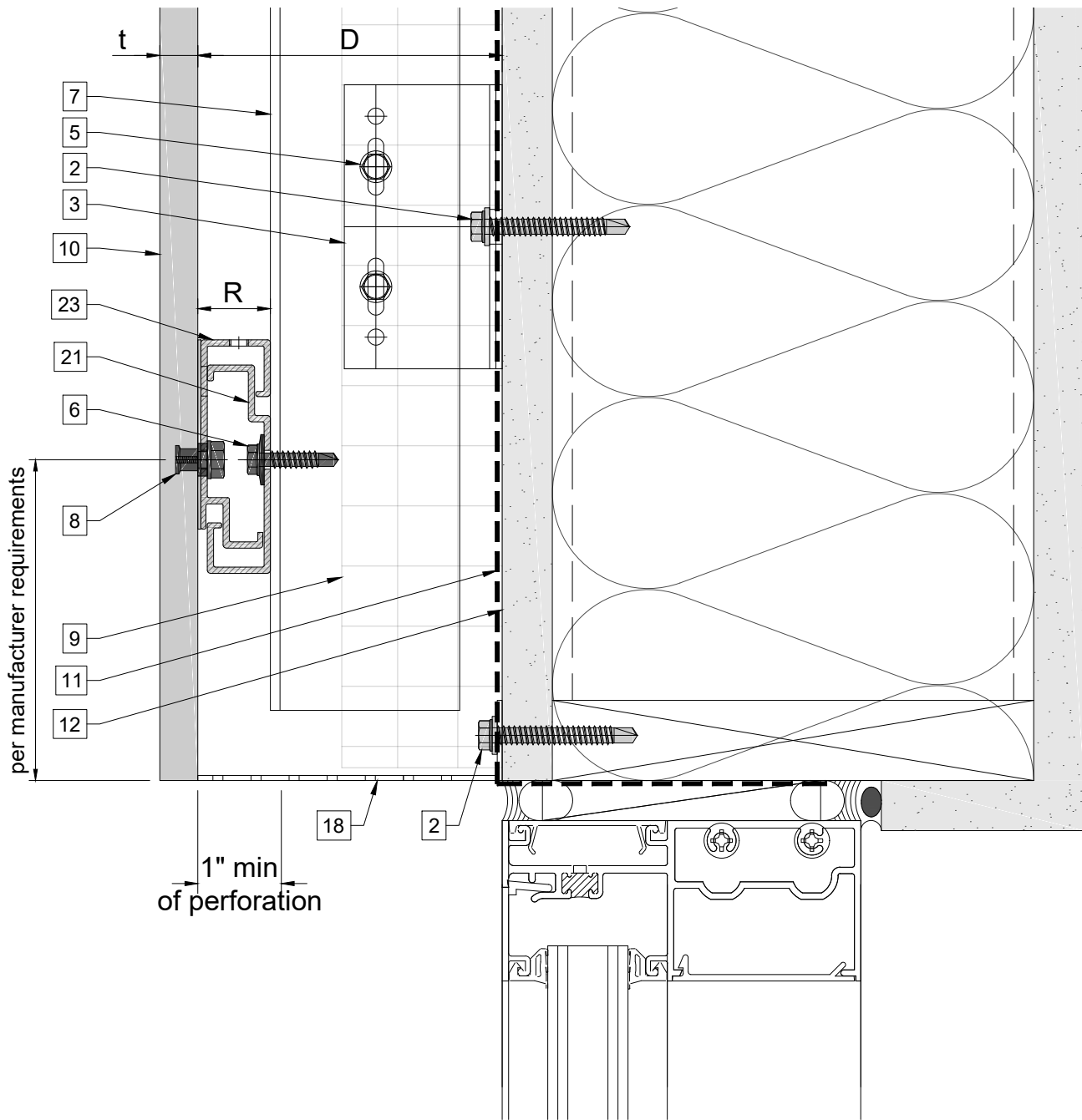
### Legend

- 1. Steel stud (16 GA typical)
- 2. Perimeter anchor
- 3. Alpha V wall bracket
- 4. Alpha V+ wall bracket
- 5. st/st self-drilling screw  $\frac{3}{16}'' \times \frac{3}{4}''$
- 6. st/st self-drilling screw  $\frac{1}{4}'' \times 1''$
- 7. Vertical L-profile
- 8. Undercut anchor
- 9. Insulation
- 10. Panel
- 11. A/V barrier

- 12. Exterior wall
- 13. Outer corner closure
- 14. Inner corner closure
- 15. Jamb closure
- 16. Horizontal L-profile
- 17. Coping
- 18. Perforated window head closure
- 19. Window sill
- 20. Perforated base closure
- 21. C-carrier rail

- 22. C-hanger, adjustable
- 23. C-hanger, non-adjustable
- 24. Leveling bolt M6
- 25. Fixing screw  $\frac{3}{16}'' \times 1''$
- 26. Rivet
- D - System depth
- t - Panel thickness
- R - C-carrier rail and C-hanger

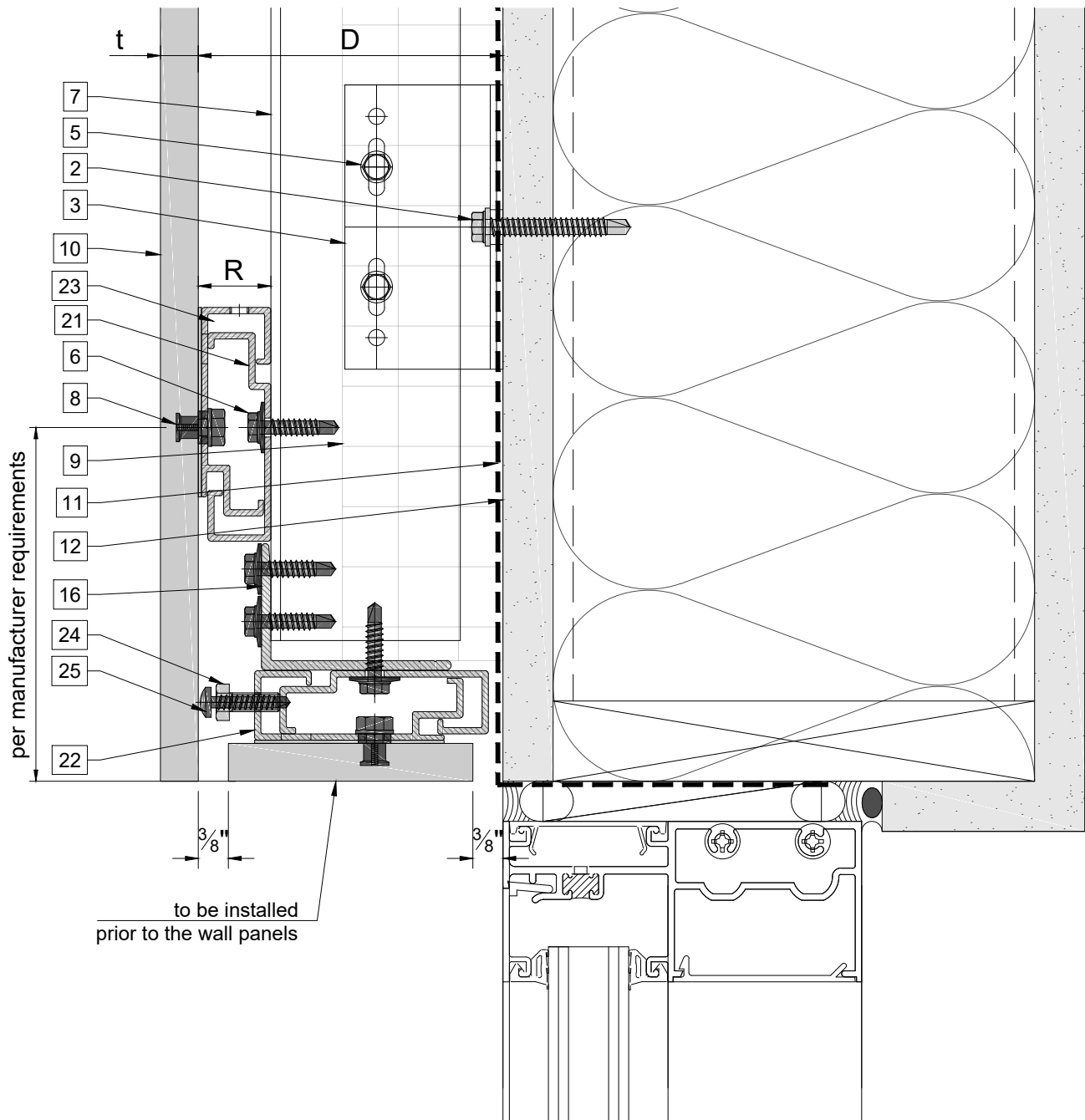
\* Ventilation will vary based on insulation depth.  
 \*\* Minimum ventilation requirement should be qualified by panel manufacturer.  
 \*\*\* One of adjustable C-hangers per panel to be fixed with fixing screw  $\frac{3}{16}'' \times 1''$



**Legend**

- |  |                                    |                                      |
|--|------------------------------------|--------------------------------------|
| 1. Steel stud (16 GA typical)                                  | 12. Exterior wall                  | 22. C-hanger, adjustable             |
| 2. Perimeter anchor  | 13. Outer corner closure           | 23. C-hanger, non-adjustable         |
| 3. Alpha V wall bracket  | 14. Inner corner closure           | 24. Leveling bolt M6                 |
| 4. Alpha V+ wall bracket                                       | 15. Jamb closure                   | 25. Fixing screw $\frac{3}{16}$ "x1" |
| 5. st/st self-drilling screw $\frac{3}{16}$ "x $\frac{3}{4}$ " | 16. Horizontal L-profile           | 26. Rivet                            |
| 6. st/st self-drilling screw $\frac{1}{4}$ "x1"                | 17. Coping                         | D - System depth                     |
| 7. Vertical L-profile  | 18. Perforated window head closure | t - Panel thickness                  |
| 8. Undercut anchor   | 19. Window sill                    | R - C-carrier rail and C-hanger      |
| 9. Insulation  | 20. Perforated base closure        |                                      |
| 10. Panel  | 21. C-carrier rail                 |                                      |
| 11. A/V barrier  |                                    |                                      |

- \* Ventilation will vary based on insulation depth.
- \*\* Minimum ventilation requirement should be qualified by panel manufacturer.
- \*\*\* One of adjustable C-hangers per panel to be fixed with fixing screw  $\frac{3}{16}$ "x1"



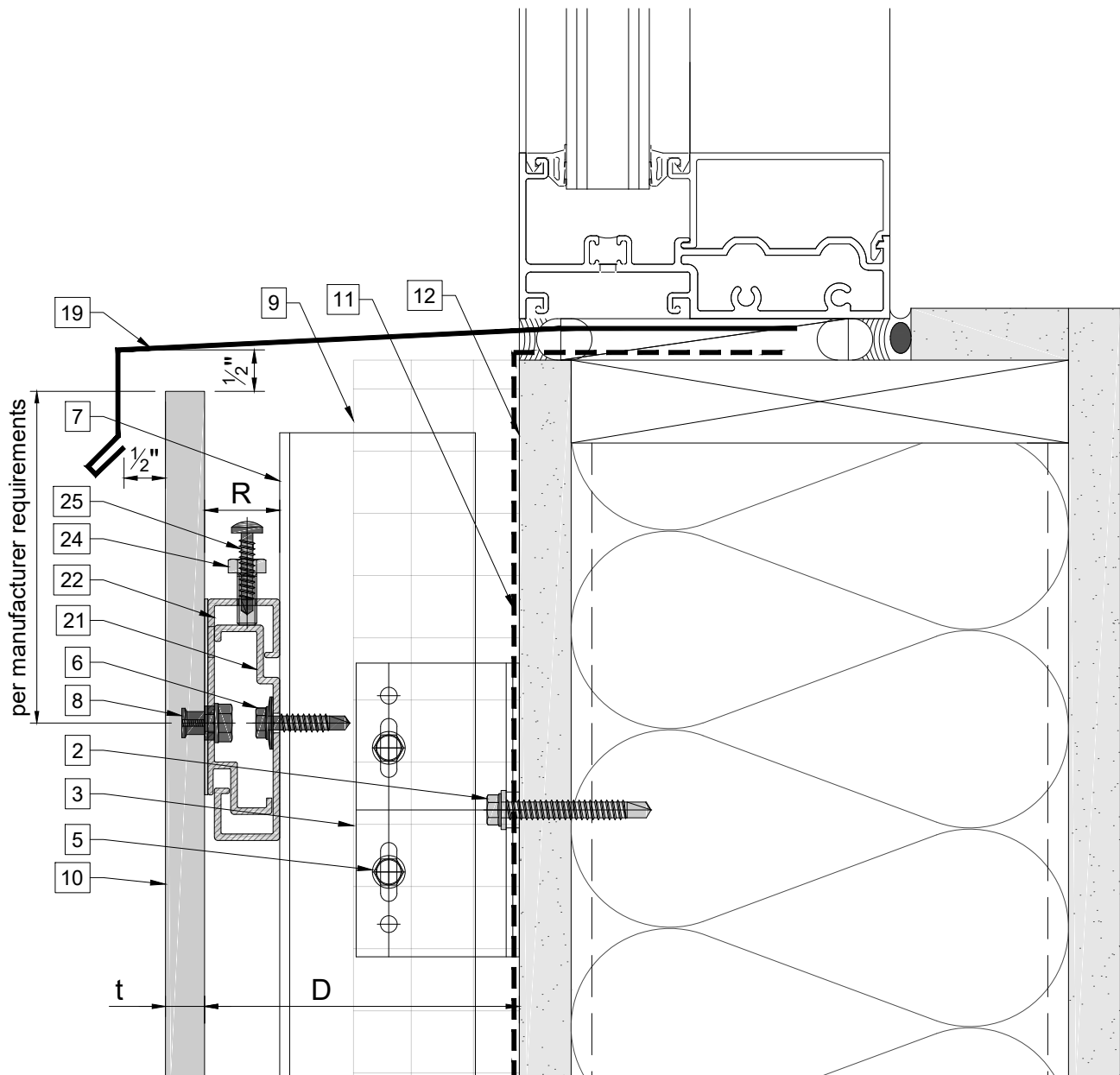
**Legend**

- 1. Steel stud (16 GA typical)
- 2. Perimeter anchor
- 3. Alpha V wall bracket
- 4. Alpha V+ wall bracket
- 5. st/st self-drilling screw  $\frac{3}{16}'' \times \frac{3}{4}''$
- 6. st/st self-drilling screw  $\frac{1}{4}'' \times 1''$
- 7. Vertical L-profile
- 8. Undercut anchor
- 9. Insulation
- 10. Panel
- 11. A/V barrier

- 12. Exterior wall
- 13. Outer corner closure
- 14. Inner corner closure
- 15. Jamb closure
- 16. Horizontal L-profile
- 17. Coping
- 18. Perforated window head closure
- 19. Window sill
- 20. Perforated base closure
- 21. C-carrier rail

- 22. C-hanger, adjustable
- 23. C-hanger, non-adjustable
- 24. Leveling bolt M6
- 25. Fixing screw  $\frac{3}{16}'' \times 1''$
- 26. Rivet
- D - System depth
- t - Panel thickness
- R - C-carrier rail and C-hanger

\* Ventilation will vary based on insulation depth.  
 \*\* Minimum ventilation requirement should be qualified by panel manufacturer.  
 \*\*\* One of adjustable C-hangers per panel to be fixed with fixing screw  $\frac{3}{16}'' \times 1''$



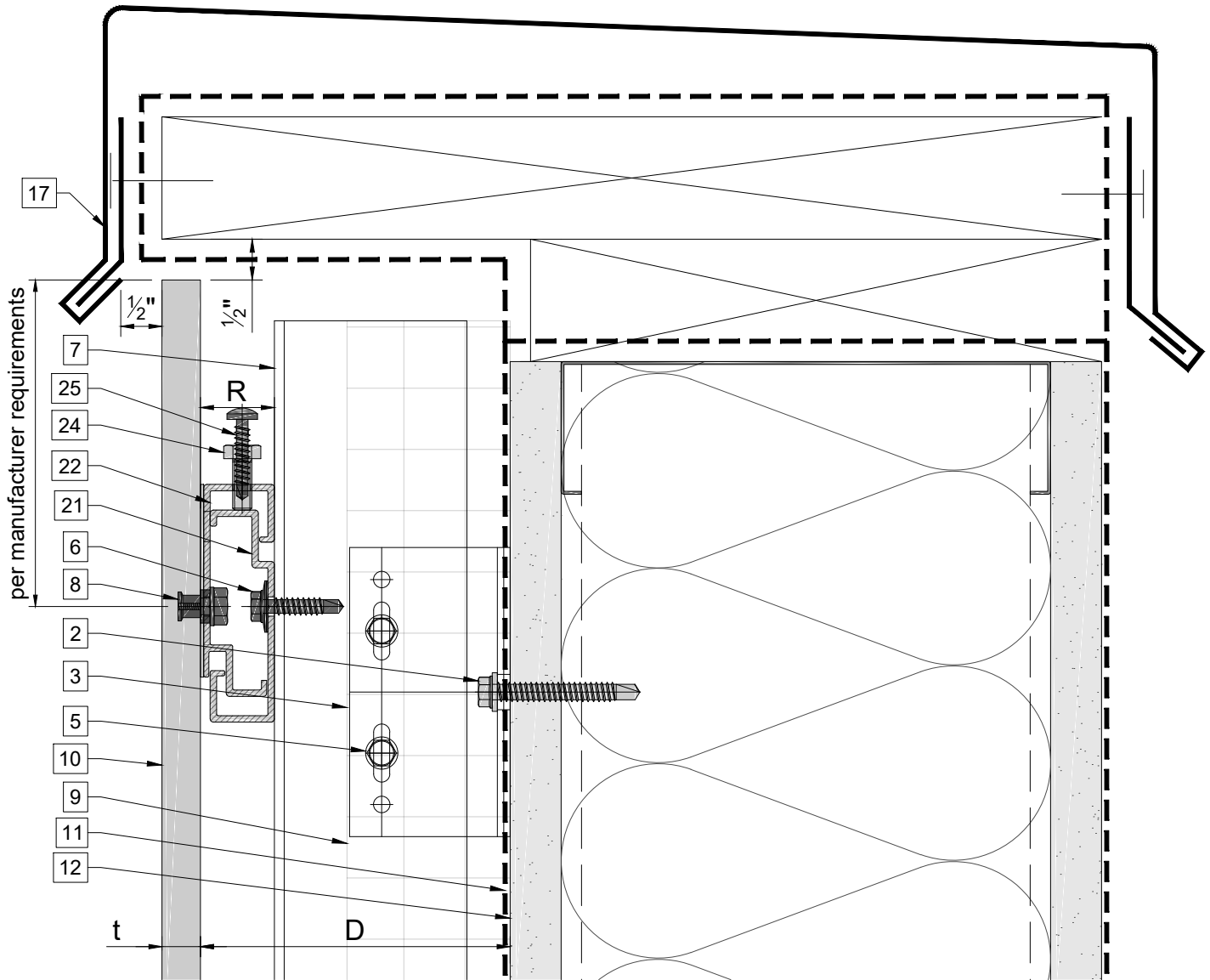
**Legend**

- 1. Steel stud (16 GA typical)
- 2. Perimeter anchor
- 3. Alpha V wall bracket
- 4. Alpha V+ wall bracket
- 5. st/st self-drilling screw  $\frac{3}{16}'' \times \frac{3}{4}''$
- 6. st/st self-drilling screw  $\frac{1}{4}'' \times 1''$
- 7. Vertical L-profile
- 8. Undercut anchor
- 9. Insulation
- 10. Panel
- 11. A/V barrier

- 12. Exterior wall
- 13. Outer corner closure
- 14. Inner corner closure
- 15. Jamb closure
- 16. Horizontal L-profile
- 17. Coping
- 18. Perforated window head closure
- 19. Window sill
- 20. Perforated base closure
- 21. C-carrier rail

- 22. C-hanger, adjustable
- 23. C-hanger, non-adjustable
- 24. Leveling bolt M6
- 25. Fixing screw  $\frac{3}{16}'' \times 1''$
- 26. Rivet
- D - System depth
- t - Panel thickness
- R - C-carrier rail and C-hanger

\* Ventilation will vary based on insulation depth.  
 \*\* Minimum ventilation requirement should be qualified by panel manufacturer.  
 \*\*\* One of adjustable C-hangers per panel to be fixed with fixing screw  $\frac{3}{16}'' \times 1''$



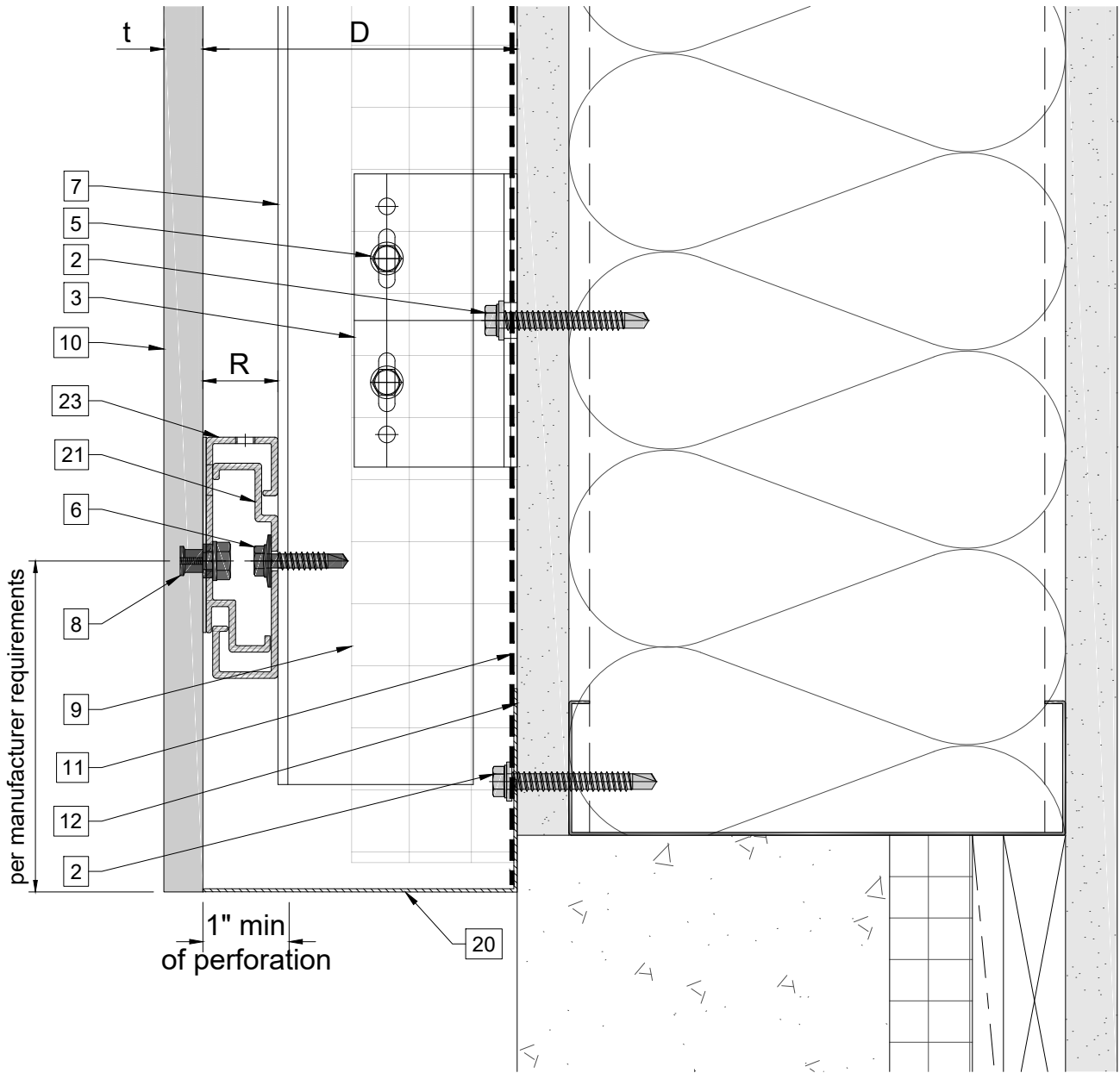
**Legend**

- 1. Steel stud (16 GA typical)
- 2. Perimeter anchor
- 3. Alpha V wall bracket
- 4. Alpha V+ wall bracket
- 5. st/st self-drilling screw  $\frac{3}{16}'' \times \frac{3}{4}''$
- 6. st/st self-drilling screw  $\frac{1}{4}'' \times 1''$
- 7. Vertical L-profile
- 8. Undercut anchor
- 9. Insulation
- 10. Panel
- 11. A/V barrier

- 12. Exterior wall
- 13. Outer corner closure
- 14. Inner corner closure
- 15. Jamb closure
- 16. Horizontal L-profile
- 17. Coping
- 18. Perforated window head closure
- 19. Window sill
- 20. Perforated base closure
- 21. C-carrier rail

- 22. C-hanger, adjustable
- 23. C-hanger, non-adjustable
- 24. Leveling bolt M6
- 25. Fixing screw  $\frac{3}{16}'' \times 1''$
- 26. Rivet
- D - System depth
- t - Panel thickness
- R - C-carrier rail and C-hanger

\* Ventilation will vary based on insulation depth.  
 \*\* Minimum ventilation requirement should be qualified by panel manufacturer.  
 \*\*\* One of adjustable C-hangers per panel to be fixed with fixing screw  $\frac{3}{16}'' \times 1''$



**Legend**

- 1. Steel stud (16 GA typical)
- 2. Perimeter anchor
- 3. Alpha V wall bracket
- 4. Alpha V+ wall bracket
- 5. st/st self-drilling screw  $\frac{3}{16}'' \times \frac{3}{4}''$
- 6. st/st self-drilling screw  $\frac{1}{4}'' \times 1''$
- 7. Vertical L-profile
- 8. Undercut anchor
- 9. Insulation
- 10. Panel
- 11. A/V barrier

- 12. Exterior wall
- 13. Outer corner closure
- 14. Inner corner closure
- 15. Jamb closure
- 16. Horizontal L-profile
- 17. Coping
- 18. Perforated window head closure
- 19. Window sill
- 20. Perforated base closure
- 21. C-carrier rail

- 22. C-hanger, adjustable
  - 23. C-hanger, non-adjustable
  - 24. Leveling bolt M6
  - 25. Fixing screw  $\frac{3}{16}'' \times 1''$
  - 26. Rivet
- D - System depth  
t - Panel thickness  
R - C-carrier rail and C-hanger

\* Ventilation will vary based on insulation depth.  
 \*\* Minimum ventilation requirement should be qualified by panel manufacturer.  
 \*\*\* One of adjustable C-hangers per panel to be fixed with fixing screw  $\frac{3}{16}'' \times 1''$