

## SwissPearl

Composite Cement Wall Panels

[www.swisspearl.com](http://www.swisspearl.com)

SwissPearl is a solid thru-color, color fast panel, available in more than 80 stock colors and 5 finish options. Installed on a vented system that provides excellent hot weather performance.

Element is the authorized SwissPearl dealer for Texas, Oklahoma, Louisiana, Mississippi & Alabama.



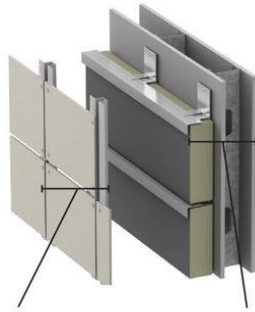
Collin College - Allen, TX



UTD Brain Health - Dallas, TX

# SWISS pearl®

**ECO CLADDING**  
Engineered. Compliant. Optimized.



PANEL SUB-FRAMING C.I. SUB-FRAMING

## ECO CLADDING

[www.ecocladding.com](http://www.ecocladding.com)

ASHRAE 90.1 compliant and engineered sub-framing solutions for a variety of cladding options.

With a variety of solutions being offered, our aluminum "C.I. Sub-framing" provides the best combination of fire safety, engineering and thermal performance at a cost-effective price.

## MOSO BAMBOO

[www.moso-bamboo.com/us/](http://www.moso-bamboo.com/us/)



MOSO® Bamboo X-treme® siding is a solid, High Density® exterior bamboo board, made from compressed bamboo strips. Now you can add the beauty of natural wood siding to your building and enjoy all the benefits of a durable, stable, low maintenance façade.



We are affiliated with



# ELEMENT

ARCHITECTURAL PRODUCTS

PH 469-518-5860  
[elementpanels.com](http://elementpanels.com)  
[info@elementpanels.com](mailto:info@elementpanels.com)

# ELEMENT

ARCHITECTURAL PRODUCTS



## Innovative Exterior Panel Systems



469-518-5860 ■ [www.elementpanels.com](http://www.elementpanels.com)

## Citadel Architectural Products

Metal Composite Panel Systems

[www.citadelap.com/projects](http://www.citadelap.com/projects)

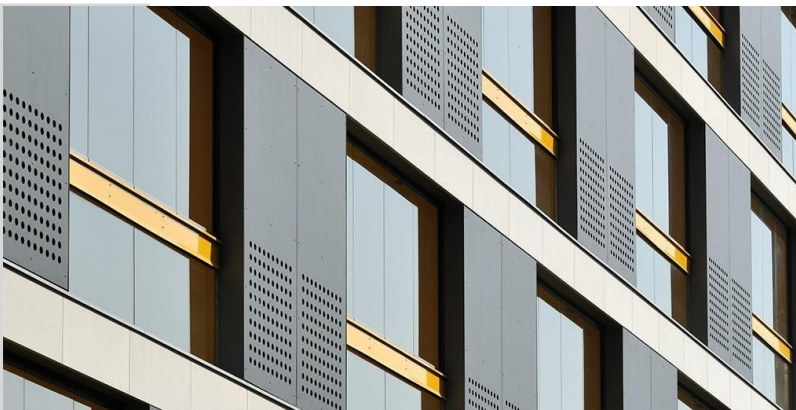
**Envelope 2000** 4mm Fire Rated panel system. 20 & 30 year finish warranties. Dry joint systems and efficient Reveal extrusion system.

**Glazeguard 1000** 1" Insulated metal panels—a practical alternative to glass spandrel panels.



**SWISS  
pearl®**

High Density, thru  
color fiber cement  
panel systems



**Fundermax**

## FunderMax

Phenolic & High Pressure Laminate Panels

<https://fundermax.us>

Let your imagination soar with **FunderMax** exterior products. Our unique offering of HPL compact panels provides durable, attractive alternatives to traditional exterior building cladding.

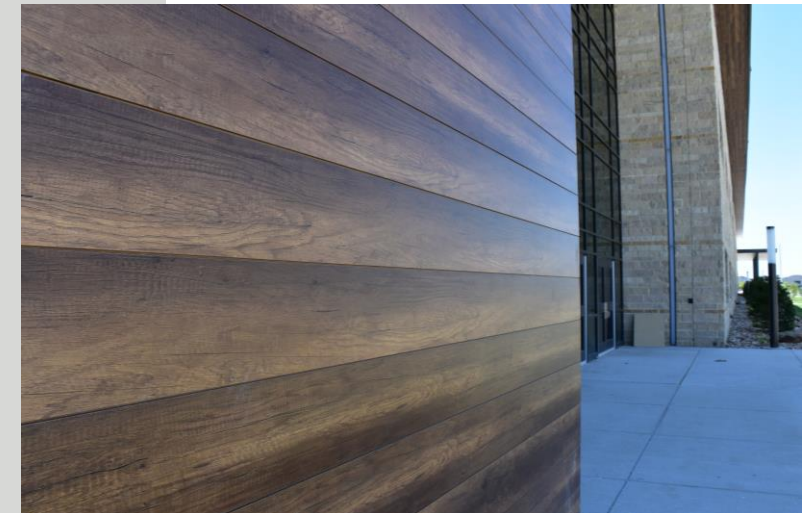
Get inspired by our hundreds of colors and distinctive finishes that help tell your design story while meeting creative and performance requirements.

Suitable for a myriad of applications, **FunderMax** exterior product attributes include:

- Weather resistance; suitable for any climate
- High level of UV resistance
- Non-porous
- Double-hardened surfaces
- Scratch and abrasion-resistant
- Highly impact resistant
- Easy to clean
- Sustainable

**FunderMax** offers a competitive 10-year product warranty that includes labor.

Discover the endless possibilities that **FunderMax** phenolic panels have to offer.



Panther Creek High School, Frisco, TX Modulo Plank System, Barrique Oak 5173

*More high  
performance  
panels on  
the back.*

Contact us at **469.518.5860** for samples, literature, or to set up a meeting to learn more about our high performance panels.

To see a complete portfolio of our work, visit us at [elementpanels.com](http://elementpanels.com).

**ELEMENT**  
ARCHITECTURAL PRODUCTS